

EGPL-22S4

M.2 2242 to Dual Isolated 2.5GbE LAN Horizontal Module

Customer:

Customer

Part Number:

Innodisk

Part Number:

Innodisk

Model Name:

Date:

| | |
|-----------------|-----------------|
| Innodisk | Customer |
| Approver | Approver |
| | |

Table of Contents

- TABLE OF CONTENTS I**
- REVISION HISTORYII**
- LIST OF TABLES 1**
- LIST OF FIGURES 2**
- 1. PRODUCT INTRODUCTION 3**
 - 1.1. OVERVIEW 3
 - 1.2. FEATURES 3
- 2. PRODUCT SPECIFICATIONS 5**
 - 2.1. DEVICE PARAMETERS 5
 - 2.2. ELECTRICAL SPECIFICATIONS 5
 - 2.2.1.POWER REQUIREMENT 5
 - 2.2.2.POWER CONSUMPTION 5
 - 2.3. ENVIRONMENTAL SPECIFICATIONS 5
 - 2.3.1.TEMPERATURE RANGES 5
 - 2.3.2.HUMIDITY 6
 - 2.3.3.SHOCK AND VIBRATION 6
 - 2.3.4.MEAN TIME BETWEEN FAILURE (MTBF) 6
 - 2.4. CE AND FCC COMPATIBILITY 6
 - 2.5. ROHS COMPLIANCE 6
 - 2.6. HARDWARE..... 7
 - 2.6.1.LAYOUT 7
 - 2.6.2.PIN DEFINE 7
 - 2.6.3.I/O CONNECTOR MECHANICAL DRAWING & PIN DEFINES 9
 - 2.6.4.EGPL-22S4 MECHANICAL DRAWING12
 - 2.6.5.CABLE MECHANICAL DRAWING13
 - 2.6.6.PACKING LIST13
 - 2.7. SOFTWARE SUPPORT.....14
- 3. INSTALLATION GUIDE 14**
- 4. APPEDIX 15**
- CONTACT US..... 22**

REVISION HISTORY

| Revision | Description | Date |
|----------|----------------|-----------|
| 1.0 | First Released | Jun, 2023 |

List of Tables

TABLE 1: DEVICE PARAMETERS 5

TABLE 2: POWER REQUIREMENT..... 5

TABLE 3: POWER CONSUMPTION 5

TABLE 4: TEMPERATURE RANGES..... 5

TABLE 5: SHOCK AND VIBRATION 6

TABLE 6: MEAN TIME BETWEEN FAILURE (MTBF)..... 6

TABLE 7: M.2 2242 PCB LAYOUT LEGEND..... 7

TABLE 8: DAUGHTER BOARD PCB LAYOUT LEGEND 7

TABLE 9: M.2 B-M KEY PIN DEFINE 8

TABLE 10: WIRE TO BOARD SMD 1*13P CONNECTOR PIN DEFINE..... 9

TABLE 11: RJ45 LAN LED TABLE..... 11

List of Figures

- FIGURE 1: BLOCK DIAGRAM 3**
- FIGURE 2: M.2 2242 BOARD PICTURE..... 4**
- FIGURE 3: MOUNTING HOLE DAUGHTER BOARD PICTURE 4**
- FIGURE 4: WIRE TO BOARD SMD 1*13P CONNECTOR DRAWING..... 9**
- FIGURE 5: RJ45 CONNECTOR DRAWING 10**
- FIGURE 6: EGPL-22S4 M.2 BOARD DRAWING 12**
- FIGURE 7: MOUNTING HOLE DAUGHTER BOARD DRAWING (EGPL-22S4-C1/W1) 12**
- FIGURE 8: BOARD TO BOARD LAN CABLE DRAWING..... 13**

1. Product Introduction

1.1. Overview

Innodisk EGPL-22S4 is designed with M.2 2242 form factor with B/M key, EGPL-22S4 supports PCIe Gen 2.1 with a single lane to dual isolated 2.5GbE LAN, optimized for higher performance and lower power, which brings you a flexible expansion solution for embedded systems.

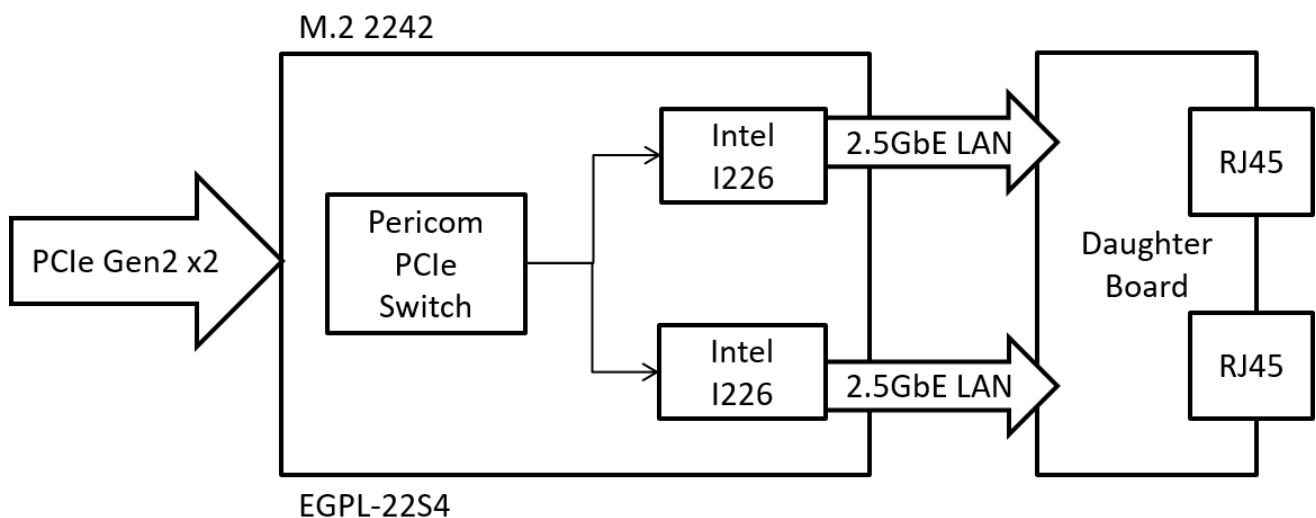


Figure 1: Block Diagram

1.2. Features

- Dual isolated 2.5GbE LAN ports
- Complies with EN61000-4-5 2kV surge protection
- Complies with IEC 60950-1:2005 + A1: 2009 + A2:2013 2kV HiPOT protection
- Complies with EN61000-4-2 (ESD) Air-15kV, Contact-8kV
- Flexible daughter board with cable to fit into different system
- Industrial temperature -40 °C to 85 °C
- Industrial design, manufactured in Innodisk Taiwan

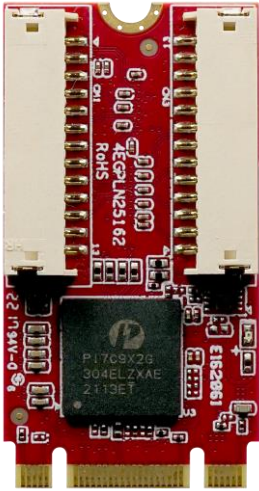


Figure 2: M.2 2242 Board Picture

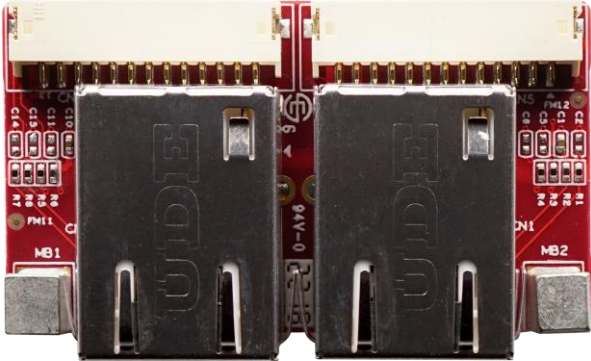


Figure 3: Mounting Hole Daughter Board Picture

2. Product Specifications

2.1. Device Parameters

Table 1: Device Parameters

| | |
|--------------------------|--|
| Form Factor | M.2 2242 B-M |
| Input I/F | PCI Express 2.1 x 2 |
| Output I/F | Dual 2.5GbE LAN |
| Output Connector | RJ45 x 2 |
| Dimension (WxLxH) | Main board: 22 x 42 x 5.95 mm Daughter board: 50 x 28 x 19.75mm |

2.2. Electrical Specifications

2.2.1. Power Requirement

Table 2: Power Requirement

| Item | Connector | Rating |
|---------------|-------------------|--------------|
| Input voltage | M.2 Golden Finger | +3.3 DC +-5% |

2.2.2. Power Consumption

Table 3: Power Consumption

| Voltage(V) | RMS(mA) | Max (mA) |
|------------|---------|----------|
| 3.3 | 874 | 979 |

2.3. Environmental Specifications

2.3.1. Temperature Ranges

Table 4: Temperature Ranges

| Temperature | Range |
|-------------|--|
| Operating | Standard Grade: 0°C to +70°C Industrial Grade: -40°C to +85°C |
| Storage | -55°C to +95°C |

2.3.2. Humidity

Relative Humidity: 10-95%, non-condensing

2.3.3. Shock and Vibration

Table 5: Shock and Vibration

| Reliability | Test Conditions | Reference Standards |
|------------------|---------------------------------|---------------------|
| Vibration | 7 Hz to 2K Hz, 20G, 3 axes | IEC 68-2-6 |
| Mechanical Shock | Duration: 0.5ms, 1500 G, 3 axes | IEC 68-2-27 |

2.3.4. Mean Time between Failure (MTBF)

Reliability prediction methodology provides the basis for reliability evaluation and analysis. The purpose of the prediction is to predict the life time of the product in units of failure rate and MTBF.

Table 6: Mean Time between Failure (MTBF)

| Product | Condition | MTBF (Hours) |
|-----------|---|--------------|
| EGPL-22S4 | The analysis is at 25°C ambient temperature by Telcordia SR-332, Issues 4, Method I, Case 3 under Ground Benign, Controlled environment, 50% operation stress | 11,706,003 |

2.4. CE and FCC Compatibility

EGPL-22S4 conforms to CE and FCC requirements.

2.5. RoHS Compliance

EGPL-22S4 is fully compliant with RoHS directive.

2.6. Hardware

2.6.1. Layout

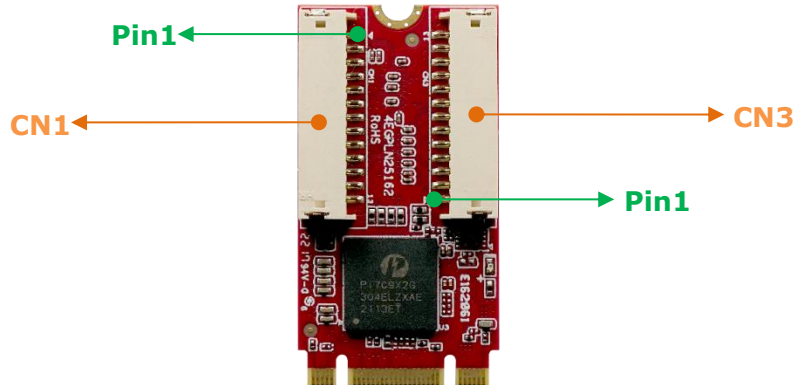


Table 7: M.2 2242 PCB Layout Legend

| Label | Connector Type | Function |
|---------|--|--------------------|
| CN1,CN3 | Wire to board SMD 1*13P 90° P:1.5mm | LAN and LED Signal |

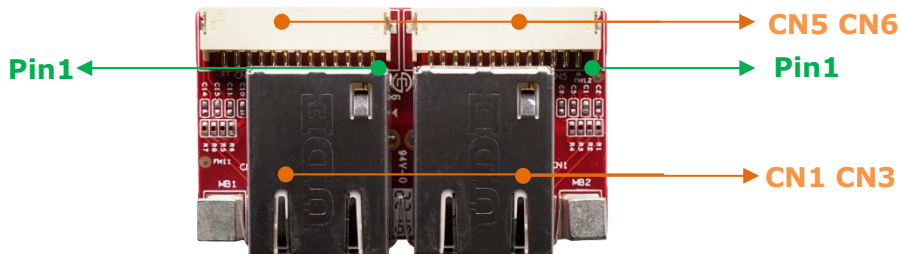
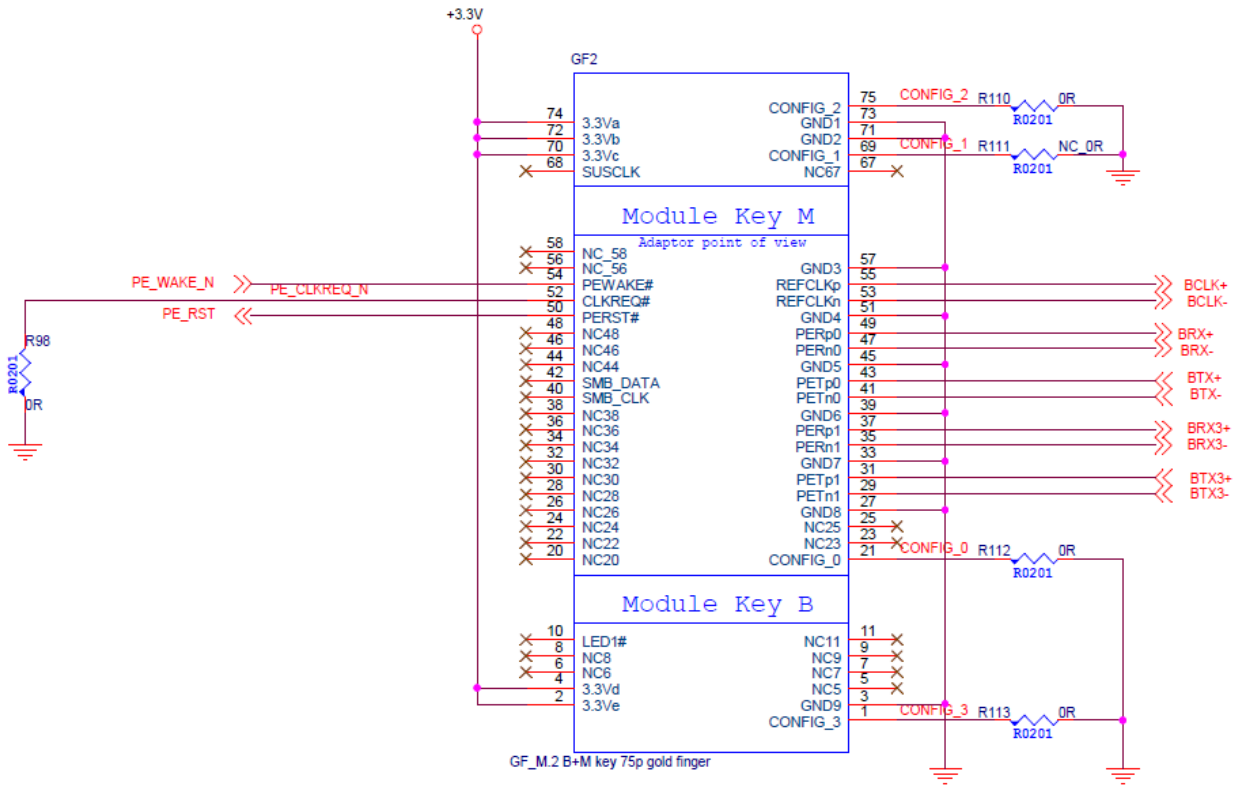


Table 8: Daughter Board PCB Layout Legend

| Label | Connector Type | Function |
|-------|--|---------------------------|
| CN1,3 | RJ45/T/U 2.5G Base-T DIP 10P8C 90° LED: Green-Orange/Green | LAN Port LED Indicator |
| CN5,6 | Wire to board SMD 1*13P 90° P:1.5mm | LAN and LED Signal |

2.6.2. Pin Define

Table 9: M.2 B-M Key Pin Define



2.6.3. I/O Connector Mechanical Drawing & Pin Defines

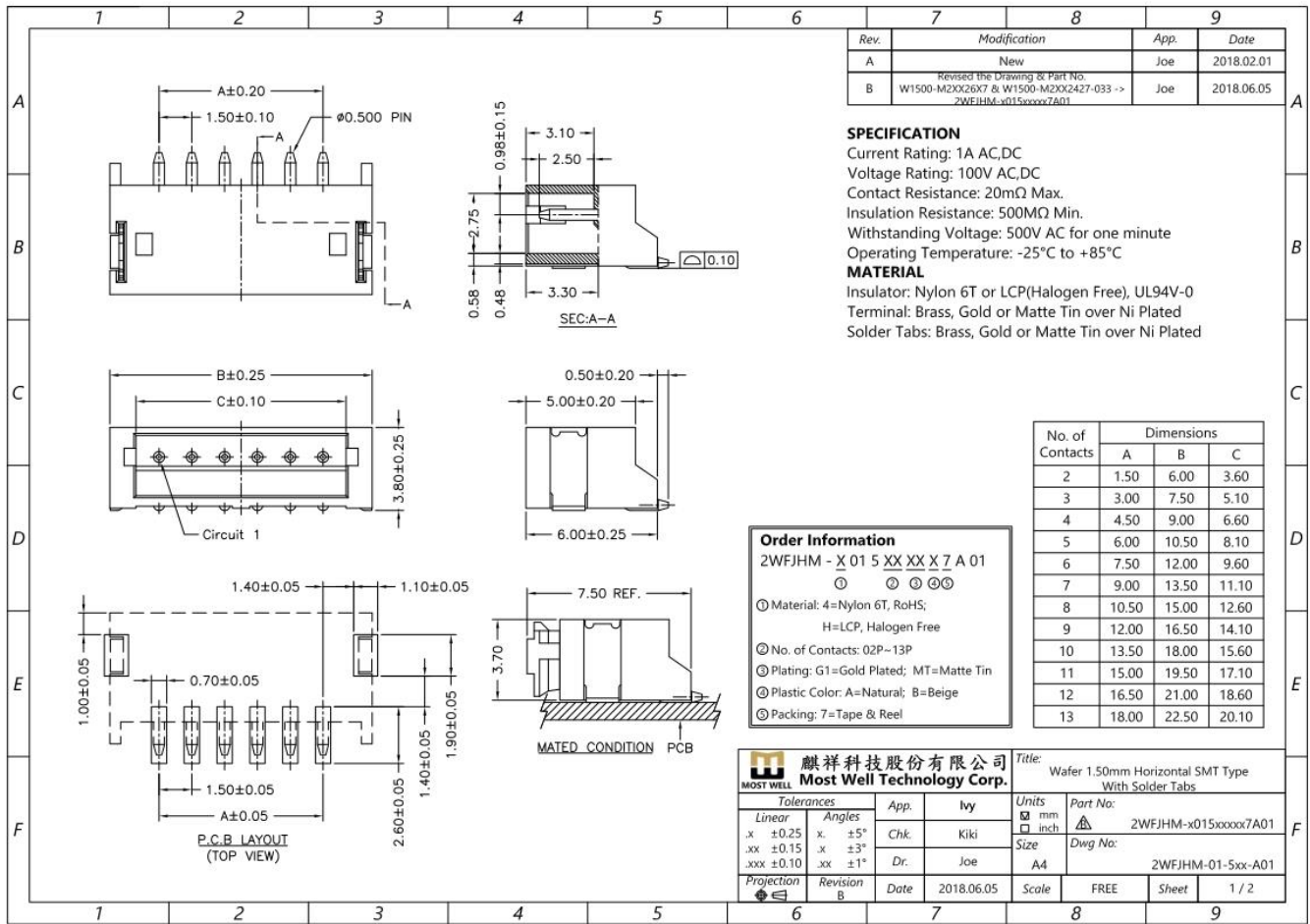


Figure 4: Wire to Board SMD 1*13P Connector Drawing

Table 10: Wire to Board SMD 1*13P Connector Pin Define

| Pin # | Signal Name |
|-------|---------------|
| 1 | MDI0P_IC |
| 2 | MDI0N_IC |
| 3 | MDI1P_IC |
| 4 | MDI1N_IC |
| 5 | MDI2P_IC |
| 6 | MDI2N_IC |
| 7 | MDI3P_IC |
| 8 | MDI3N_IC |
| 9 | B_SPEED_2500# |
| 10 | B_LINK_ACT_N |

| | |
|-----------|---------------|
| 11 | B_SPEED_1000# |
| 12 | GND |
| 13 | 3.3V |

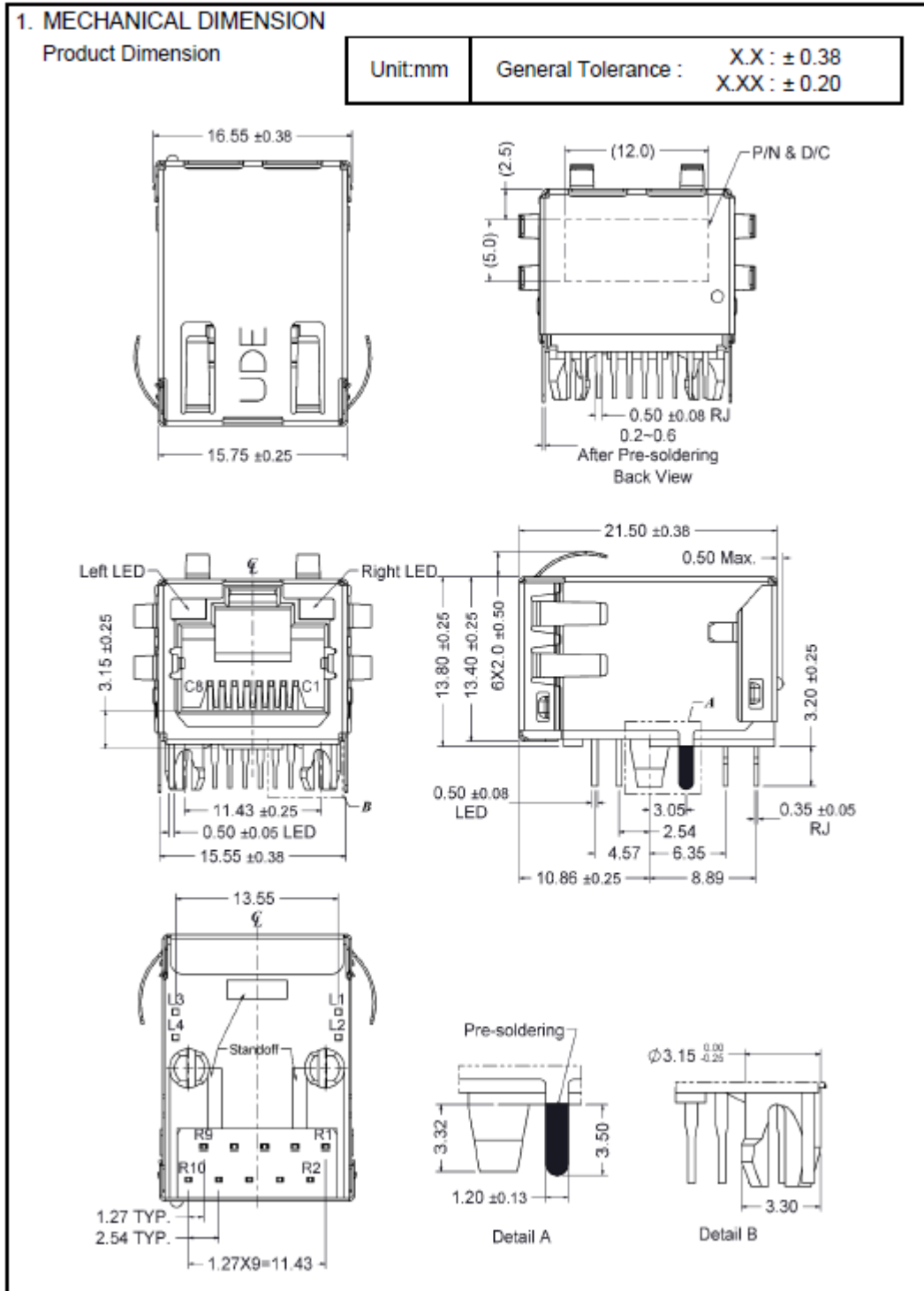
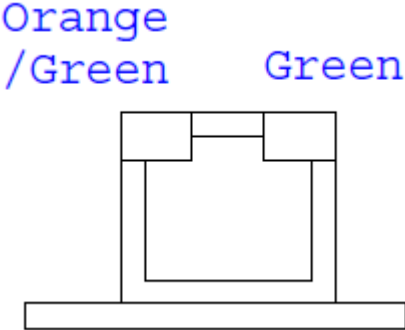


Figure 5: RJ45 Connector Drawing

Table 11: RJ45 LAN LED Table



| Speed LED | |
|--------------------------|----------------|
| 10M | OFF |
| 100M | OFF |
| 1G | Orange |
| 2.5G | Green |
| Link-Activity LED | |
| Link-up | Green |
| Tx/Rx Activity | Blinking Green |

2.6.4. EGPL-22S4 Mechanical Drawing

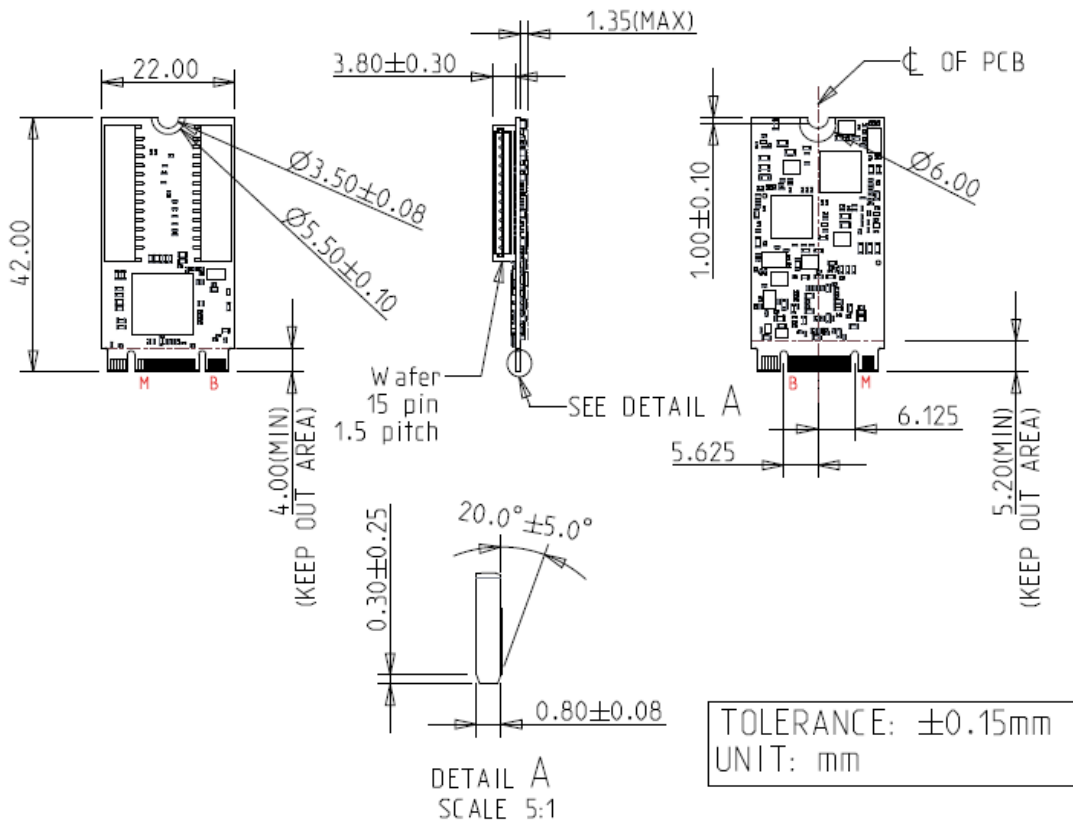


Figure 6: EGPL-22S4 M.2 Board Drawing

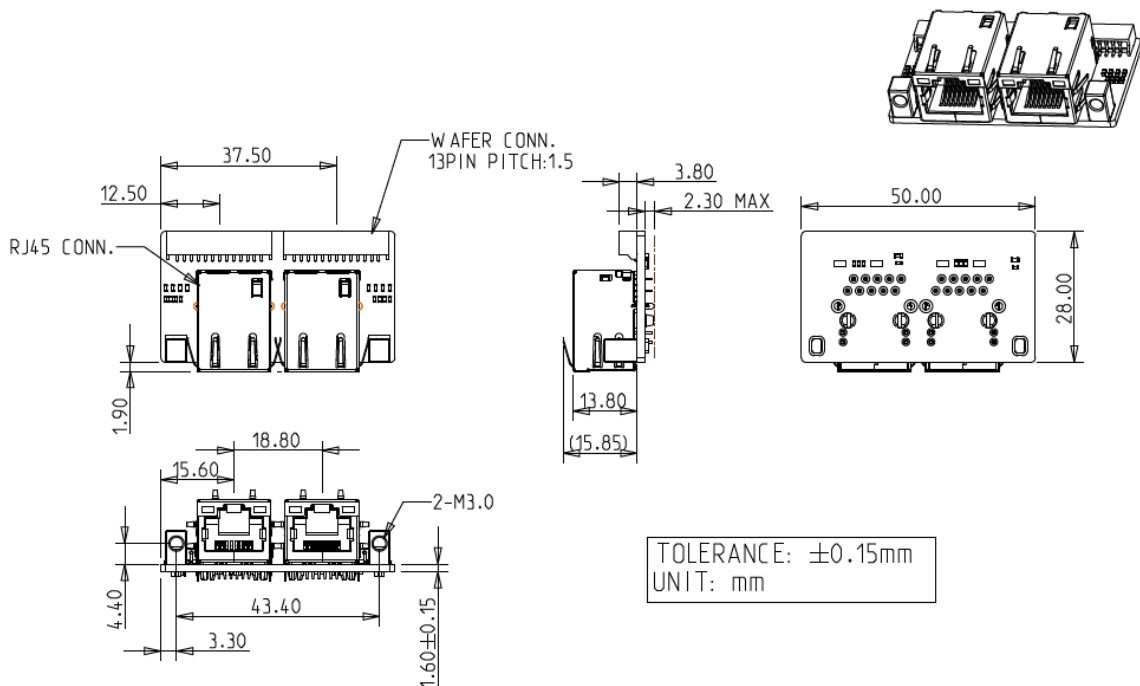


Figure 7: Mounting Hole Daughter Board Drawing (EGPL-22S4-C1/W1)

2.6.5. Cable Mechanical Drawing

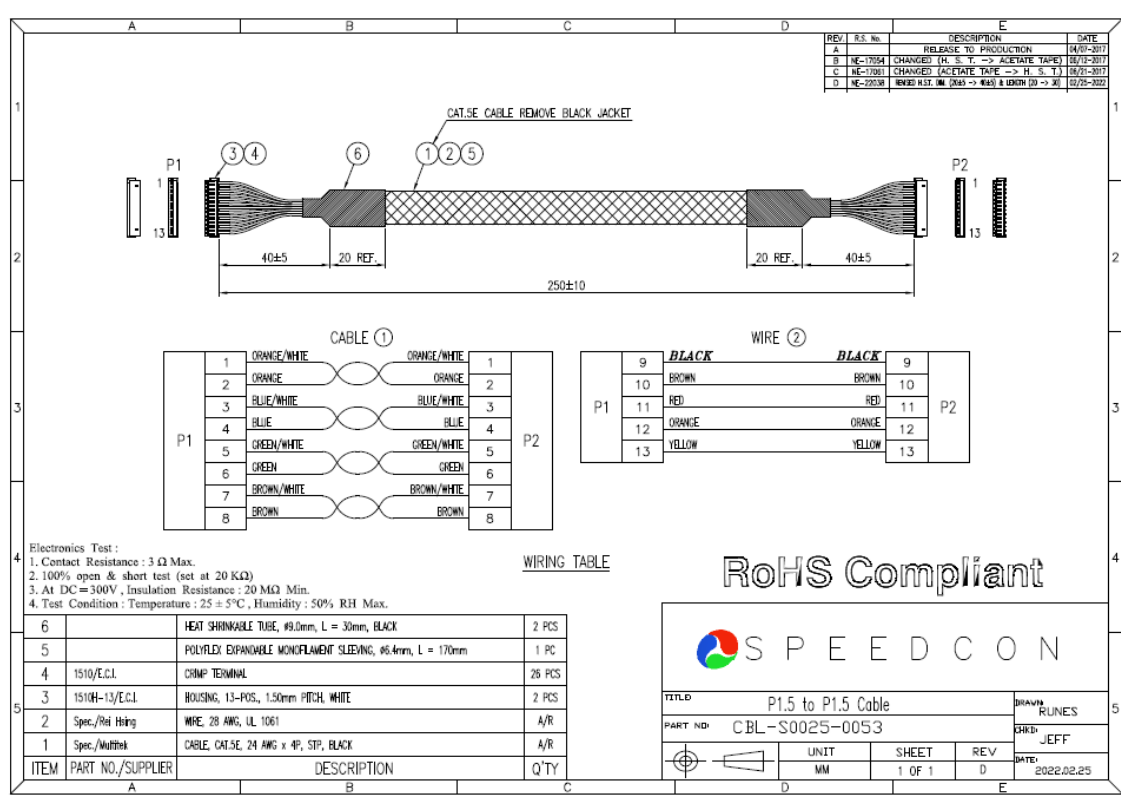


Figure 8: Board to Board LAN Cable Drawing

2.6.6. Packing List

- EGPL-22S4 M.2 Board x 1
- EGPL-22S4 Daughter Board x 1
- Board to Board LAN Cable x 2

2.7. Software Support

Foxville (I225/I226) Operating System Support Matrix:

| Operating System / SW | I225 - x86, 64 bit | I226 – x86, 64 bit |
|---|--|--|
| Windows 7 / 8 / 8.1 | No | |
| Windows 10 RS5+ / 10S | Yes | |
| Windows 11 | Yes (From ADL, NetAdapterCX) | |
| Windows Server 2019/2022 | Yes (LM/IT sku only) | |
| Mac OS | Yes (from OS Version 10.16.5) | Yes (from OS Version 12.3) |
| Linux | Yes (upstream kernel release – from 5.8) | Yes (upstream kernel release – from 5.16.18) |
| Linux RHEL | Yes RHEL 8.1 (LM/V sku) RHEL 8.3 (IT sku) | Yes RHEL 8.6 (LM/-V/-IT) |
| DPDK | Yes (from 20.05) | Yes (from 22.07) |
| FreeBSD | Yes | |
| Legacy PXE | Yes | Yes (UEFI PXE only) |
| UEFI 2.4 | Yes | |
| Manufacturing / NVM Programing Tools | Supported on Windows, Linux, x86 Architecture only | |

3. Installation Guide

Please download driver from Myinnodisk web site.

<https://myinnodisk.innodisk.com/myinnodisk/Login.aspx>

Windows driver still can be downloaded from intel official website.

<https://www.intel.com/content/www/us/en/download/15084/intel-ethernet-adapter-complete-driver-pack.html>

Intel dosen't provide i226 Linux driver for download.

Up Stream Kernel Release from 5.16.18.

4. Appedix

innodisk

宜鼎國際股份有限公司
Innodisk Corporation
REACH Declaration

Tel:(02)7703-3000 Fax:(02) 7703-3555 Internet: <https://www.innodisk.com/>

Innodisk Corporation pursues its social responsibility for global environmental preservation by committing to be compliant with REACH regulation (REGULATION (EC) No 1907/2006). We hereby confirm that the product(s),

Scope: Flash Memory, DRAM Module and Embedded Peripherals Products.

- The standard products of **not listed** in the **Appendix2** meet the requirements of REACH SVHC regulations(SVHCs < 0.1% in Article), as described in the candidate list table currently including 233 substances (release date: 17-Jan-2023) and shown on the ECHA website. <https://echa.europa.eu/candidate-list-table>
- The standard products listed in the **Appendix2** contain(s) one or more hazardous substances or constituents exceeding 0.1 % by weight in article if not otherwise specified in candidate list table.
Where the threshold value is exceeded, the substances in question are to be declared in accompanying. (SVHCs > 0.1% in Article).
- Comply with REACH Annex XVII.

Guarantor



Company name 公司名稱： Innodisk Corporation 宜鼎國際股份有限公司

Company Representative 公司代表人：  Yichuan Chen 陳怡全

Company Representative Title 公司代表人職稱： QA Manager 品保經理

Date 日期： 2023 / 02 / 09

RoHS 自我宣告書 (RoHS Declaration of Conformity)

Manufacturer Products: All Innodisk EM FLASH, DRAM and EP products

- 一、 宜鼎國際股份有限公司（以下稱本公司）特此保證售予貴公司之所有產品，皆符合歐盟 2011/65/EU 及 (EU) 2015/863 關於 RoHS 之規範要求。
Innodisk Corporation declares that all products sold to the company, are complied with European Union RoHS Directive (2011/65/EU) and (EU) 2015/863 requirement.
- 二、 本公司同意因本保證書或與本保證書相關事宜有所爭議時，雙方宜友好協商，達成協議。
Innodisk Corporation agrees that both parties shall settle any dispute arising from or in connection with this Declaration of Conformity by friendly negotiations.
- 三、 本公司聲明我們的產品符合 RoHS 指令的附件中 7(a)、7(c)-I、6(c) 允許豁免。
We declare, our products permitted by the following exemptions specified in the Annex of the RoHS directive.
- ※ 7(a) Lead in high melting temperature type solders (i.e. lead-based alloys containing 85% by weight or more lead).
 - ※ 7(c)-I Electrical and electronic components containing lead in a glass or ceramic other than dielectric ceramic in capacitors, e.g. piezoelectric devices, or in a glass or ceramic matrix compound.
 - ※ 6(c) Copper alloy containing up to 4% lead by weight. (This exemption applies to products that use antennas)

| Name of hazardous substance | Limited of RoHS ppm (mg/kg) |
|-----------------------------|-----------------------------|
| 鉛 (Pb) | < 1000 ppm |
| 汞 (Hg) | < 1000 ppm |
| 鎘 (Cd) | < 100 ppm |
| 六價鉻 (Cr 6+) | < 1000 ppm |
| 多溴聯苯 (PBBs) | < 1000 ppm |
| 多溴二苯醚 (PBDEs) | < 1000 ppm |
| 鄰苯二甲酸二(2-乙基己基)酯 (DEHP) | < 1000 ppm |
| 鄰苯二甲酸丁酯苯甲酯 (BBP) | < 1000 ppm |
| 鄰苯二甲酸二丁酯 (DBP) | < 1000 ppm |
| 鄰苯二甲酸二異丁酯 (DIBP) | < 1000 ppm |

宜鼎國際股份有限公司
Innodisk Corporation

立 保 證 書 人 (Guarantor)

Company name 公司名稱： Innodisk Corporation 宜鼎國際股份有限公司

Company Representative 公司代表人： 簡川勝

Company Representative Title 公司代表人職稱： Chairman 董事長

Date 日期： 2023 / 06 / 14





Statement of Conformity

Issued Date: May 02, 2023
Report No. : 2340095R-0E3012110014-A

This is to certify that the following designated product

Product : M.2 2242 to Dual Isolated 2.5GbE LAN Horizontal Module

Trademark : Innodisk

Model Number : EGPL-2#S4

#: Output items: (1:1Port,2:2Ports)

Company Name : Innodisk Corporation

This product, which has been issued the test report listed as above in DEKRA Testing and Certification Co., Ltd. Laboratory, is based on a single evaluation of one sample and confirmed to comply with the requirements of the following EMC standard.

FCC CFR Title 47 Part 15 Subpart B:2021, Class B

TEST LABORATORY

A handwritten signature in black ink, appearing to read 'Vincent Lin', written over a horizontal line.

Vincent Lin / Director

DEKRA Testing and Certification Co., Ltd.
No. 5-22, Ruishukeng, Linkou Dist., New Taipei City 24451, Taiwan
TEL:+886-2-8601-3788 FAX:+886-2-8601-3789 Email: info.tw@dekra.com <http://www.dekra.com.tw>

innodisk



Statement of Conformity

Issued Date: May 02, 2023
Report No. : 2340095R-0E3012100115-A

This is to certify that the following designated product

Product : M.2 2242 to Dual Isolated 2.5GbE LAN Horizontal Module
Trademark : Innodisk
Model Number : EGPL-2#S4
#: Output items: (1:1Port,2:2Ports)
Company Name : Innodisk Corporation

This product, which has been issued the test report listed as above in DEKRA Testing and Certification Co., Ltd. Laboratory, is based on a single evaluation of one sample and confirmed to comply with the requirements of the following EMC standard.

EN 55032:2015/A1:2020, Class B

EN 55035:2017/A11:2020

IEC 61000-4-2 Ed. 2.0:2008

IEC 61000-4-3 Ed. 4.0:2020

IEC 61000-4-4 Ed. 3.0:2012

IEC 61000-4-6 Ed. 4.0:2013

IEC 61000-4-8 Ed. 2.0:2009

TEST LABORATORY

Vincent Lin / Director

DEKRA Testing and Certification Co., Ltd.
 No. 5-22, Ruishukeng, Linkou Dist., New Taipei City 24451, Taiwan
 TEL:+886-2-8601-3788 FAX:+886-2-8601-3789 Email: info.tw@dekra.com <http://www.dekra.com.tw>



Statement of Conformity

Issued Date: May 02, 2023
Report No. : 2340095R-0E3012110014-A

This is to certify that the following designated product

Product : M.2 2242 to Dual Isolated 2.5GbE LAN Horizontal Module
Trademark : Innodisk
Model Number : EGPL-2#S4
#: Output items: (1:1Port,2:2Ports)
Company Name : Innodisk Corporation

This product, which has been issued the test report listed as above in DEKRA Testing and Certification Co., Ltd. Laboratory, is based on a single evaluation of one sample and confirmed to comply with the requirements of the following EMC standard.

ICES-003 Issue 7:2020, Class B

TEST LABORATORY

A handwritten signature in black ink, appearing to read 'Vincent Lin'.

Vincent Lin / Director

DEKRA Testing and Certification Co., Ltd.
No. 5-22, Ruishukeng, Linkou Dist., New Taipei City 24451, Taiwan
TEL:+886-2-8601-3788 FAX:+886-2-8601-3789 Email: info.tw@dekra.com <http://www.dekra.com.tw>



Statement of Conformity

Issued Date: May 02, 2023
Report No. : 2340095R-0E3012100115-A

This is to certify that the following designated product

Product : M.2 2242 to Dual Isolated 2.5GbE LAN Horizontal Module
Trademark : Innodisk
Model Number : EGPL-2#S4
#: Output items: (1:1Port,2:2Ports)
Company Name : Innodisk Corporation

This product, which has been issued the test report listed as above in DEKRA Testing and Certification Co., Ltd. Laboratory, is based on a single evaluation of one sample and confirmed to comply with the requirements of the following EMC standard.

BS EN 55032:2015+A1:2020, Class B **BS EN 55035:2017+A11:2020**
BS EN 61000-4-2:2009
BS EN IEC 61000-4-3:2020
BS EN 61000-4-4:2012
BS EN 61000-4-6:2014
BS EN 61000-4-8:2010

TEST LABORATORY

Vincent Lin / Director

DEKRA Testing and Certification Co., Ltd.
No. 5-22, Ruishukeng, Linkou Dist., New Taipei City 24451, Taiwan
TEL:+886-2-8601-3788 FAX:+886-2-8601-3789 Email: info.tw@dekra.com <http://www.dekra.com.tw>

Contact us

Headquarters (Taiwan)

5F., No. 237, Sec. 1, Datong Rd., Xizhi Dist., New Taipei City 221, Taiwan

Tel: +886-2-77033000

Email: sales@innodisk.com

Branch Offices:

USA

usasales@innodisk.com

+1-510-770-9421

Europe

eusales@innodisk.com

+31-40-3045-400

Japan

jpsales@innodisk.com

+81-3-6667-0161

China

sales_cn@innodisk.com

+86-755-2167-3689

www.innodisk.com

© 2023 Innodisk Corporation.

All right reserved. Specifications are subject to change without prior notice.

January 12, 2024