

# EGPL-G201

**M.2 to dual isolated**

**GbE LAN Module**

**Customer:**

---

**Customer**

**Part Number:**

---

**Innodisk**

**Part Number:**

---

**Innodisk**

**Model Name:**

---

**Date:**

---

<b>Innodisk Approver</b>	<b>Customer Approver</b>

## Table of Contents

<b>TABLE OF CONTENTS</b> .....	<b>I</b>
<b>REVISION HISTORY</b> .....	<b>II</b>
<b>LIST OF TABLES</b> .....	<b>1</b>
<b>LIST OF FIGURES</b> .....	<b>2</b>
<b>1. PRODUCT INTRODUCTION</b> .....	<b>3</b>
1.1. OVERVIEW .....	3
1.2. FEATURES .....	3
<b>2. PRODUCT SPECIFICATIONS</b> .....	<b>5</b>
2.1. DEVICE PARAMETERS .....	5
2.2. ELECTRICAL SPECIFICATIONS.....	5
2.2.1.POWER REQUIREMENT.....	5
2.2.2.POWER CONSUMPTION .....	5
2.3. ENVIRONMENTAL SPECIFICATIONS .....	5
2.3.1.TEMPERATURE RANGES.....	5
2.3.2.HUMIDITY .....	6
2.3.3.SHOCK AND VIBRATION .....	6
2.3.4.MEAN TIME BETWEEN FAILURE (MTBF) .....	6
2.4. CE AND FCC COMPATIBILITY.....	6
2.5. ROHS COMPLIANCE .....	6
2.6. HARDWARE.....	7
2.6.1.LAYOUT .....	7
2.6.2.PIN DEFINE .....	8
2.6.3.I/O CONNECTOR MECHANICAL DRAWING & PIN DEFINES .....	9
2.6.4.EGPL-G201 MECHANICAL DRAWING .....	12
2.6.5.CABLE MECHANICAL DRAWING.....	14
2.6.6.PACKING LIST .....	15
2.7. SOFTWARE SUPPORT.....	15
<b>3. INSTALLATION GUIDE</b> .....	<b>15</b>
<b>4. APPEDIX</b> .....	<b>16</b>
<b>CONTACT US</b> .....	<b>21</b>

## REVISION HISTORY

Revision	Description	Date
1.0	First Released	Nov, 2020
1.1	Update Certification	SEP, 2024

## List of Tables

<b>TABLE 1: DEVICE PARAMETERS .....</b>	<b>5</b>
<b>TABLE 2: POWER REQUIREMENT.....</b>	<b>5</b>
<b>TABLE 3: POWER CONSUMPTION .....</b>	<b>5</b>
<b>TABLE 4: TEMPERATURE RANGES.....</b>	<b>5</b>
<b>TABLE 5: SHOCK AND VIBRATION .....</b>	<b>6</b>
<b>TABLE 6: MEAN TIME BETWEEN FAILURE (MTBF).....</b>	<b>6</b>
<b>TABLE 7: M.2 2280 PCB LAYOUT LEGEND.....</b>	<b>7</b>
<b>TABLE 8: DAUGHTER BOARD PCB LAYOUT LEGEND .....</b>	<b>7</b>
<b>TABLE 9: M.2 B-M KEY PIN DEFINE.....</b>	<b>8</b>
<b>TABLE 10: WIRE TO BOARD SMD 2*10P CONNECTOR PIN DEFINE.....</b>	<b>10</b>
<b>TABLE 11: RJ45 LAN LED TABLE.....</b>	<b>12</b>

## List of Figures

<b>FIGURE 1: BLOCK DIAGRAM .....</b>	<b>3</b>
<b>FIGURE 2: M.2 2280 BOARD PICTURE.....</b>	<b>4</b>
<b>FIGURE 3: MOUNTING HOLE DAUGHTER BOARD PICTURE (EGPL-G201-C1/W1).....</b>	<b>4</b>
<b>FIGURE 4: BRACKET DAUGHTER BOARD PICTURE (EGPL-G201-C2/W2) .....</b>	<b>4</b>
<b>FIGURE 5: WIRE TO BOARD SMD 2*10P CONNECTOR DRAWING .....</b>	<b>9</b>
<b>FIGURE 6: RJ45 CONNECTOR DRAWING .....</b>	<b>11</b>
<b>FIGURE 7: EGPL-G201 M.2 BOARD DRAWING .....</b>	<b>12</b>
<b>FIGURE 8: MOUNTING HOLE DAUGHTER BOARD DRAWING (EGPL-G201-C1/W1) .....</b>	<b>13</b>
<b>FIGURE 9: BRACKET DAUGHTER BOARD DRAWING (EGPL-G201-C2/W2).....</b>	<b>13</b>
<b>FIGURE 10: BRACKET DRAWING .....</b>	<b>14</b>
<b>FIGURE 11: BOARD TO BOARD LAN CABLE DRAWING.....</b>	<b>14</b>

# 1. Product Introduction

## 1.1. Overview

Innodisk EGPL-G201 is designed with M.2 2280 form factor with B/M key, EGPL-G201 supports PCIe Gen 2.1 with a single lane to single isolated GbE LAN, optimized for higher performance and lower power, which brings you a flexible expansion solution for embedded systems.

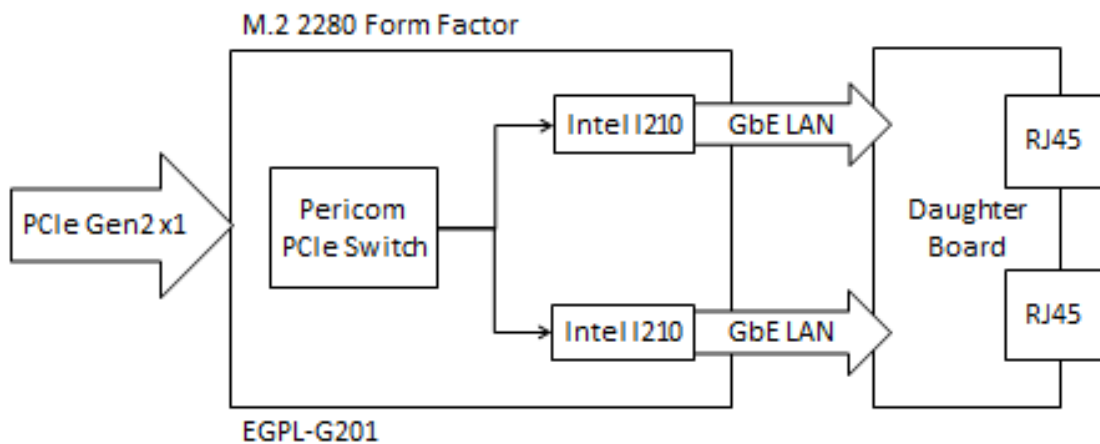


Figure 1: Block Diagram

## 1.2. Features

- Dual isolated GbE LAN ports
- Complies with EN61000-4-5 2kV Surge protection
- Complies with IEC 60950-1:2005 + A1: 2009 + A2:2013 2kV HiPOT protection
- Complies with EN61000-4-2 (ESD) Air-15kV, Contact-8kV
- Flexible daughter board with cable to fit into different system
- Optional terminal mounting hole or bracket for daughter board



Figure 2: M.2 2280 Board Picture

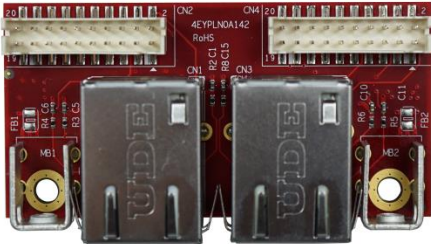


Figure 3: Mounting Hole Daughter Board Picture (EGPL-G201-C1/W1)



Figure 4: Bracket Daughter Board Picture (EGPL-G201-C2/W2)

## 2. Product Specifications

### 2.1. Device Parameters

**Table 1: Device Parameters**

<b>Form Factor</b>	M.2 2280 B-M
<b>Input I/F</b>	PCI Express 2.1 x 1
<b>Output I/F</b>	GbE LAN x 2
<b>Output Connector</b>	RJ45 x 2
<b>Dimension (WxLxH)</b>	M.2 Board: 22 x 80 x 9.3 mm Daughter Board: 30 x 59.95 x 19.37

### 2.2. Electrical Specifications

#### 2.2.1. Power Requirement

**Table 2: Power Requirement**

Item	Connector	Rating
Input voltage	M.2 Golden Finger	+3.3 DC +-5%

#### 2.2.2. Power Consumption

**Table 3: Power Consumption**

Full Load (mA)	Voltage (V)
450	3.3

### 2.3. Environmental Specifications

#### 2.3.1. Temperature Ranges

**Table 4: Temperature Ranges**

Temperature	Range
Operating	Standard Grade: 0°C to +70°C Industrial Grade: -40°C to +85°
Storage	-55°C to +95°



### 2.3.2. Humidity

Relative Humidity: 10-95%, non-condensing

### 2.3.3. Shock and Vibration

**Table 5: Shock and Vibration**

Reliability	Test Conditions	Reference Standards
Vibration	7 Hz to 2K Hz, 20G, 3 axes	IEC 68-2-6
Mechanical Shock	Duration: 0.5ms, 1500 G, 3 axes	IEC 68-2-27

### 2.3.4. Mean Time between Failure (MTBF)

Reliability prediction methodology provides the basis for reliability evaluation and analysis. The purpose of the prediction is to predict the life time of the product in units of failure rate and MTBF.

**Table 6: Mean Time between Failure (MTBF)**

Product	Condition	MTBF (Hours)
EGPL-G201	The analysis is at 25°C ambient temperature by Telcordia SR-332, Issues 4, Method I, Case 3 under Ground Benign, Controlled environment, 50% operation stress	15,229,145

### 2.4. CE and FCC Compatibility

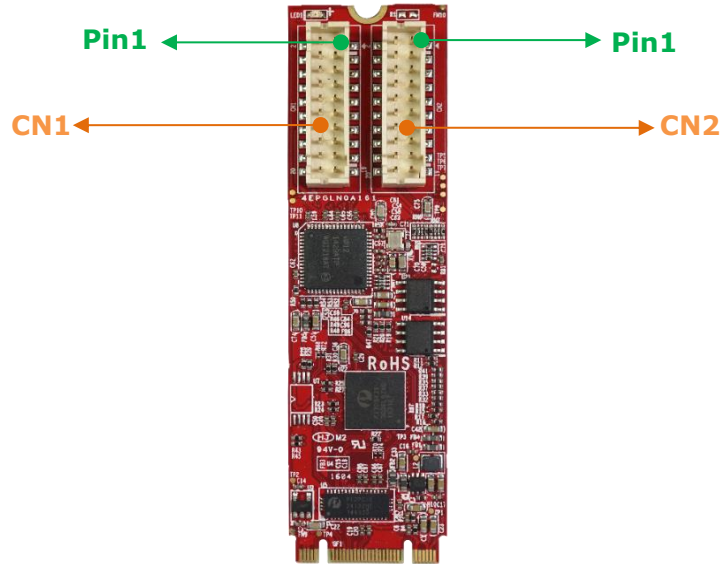
EGPL-G201 conforms to CE and FCC requirements.

### 2.5. RoHS Compliance

EGPL-G201 is fully compliant with RoHS directive.

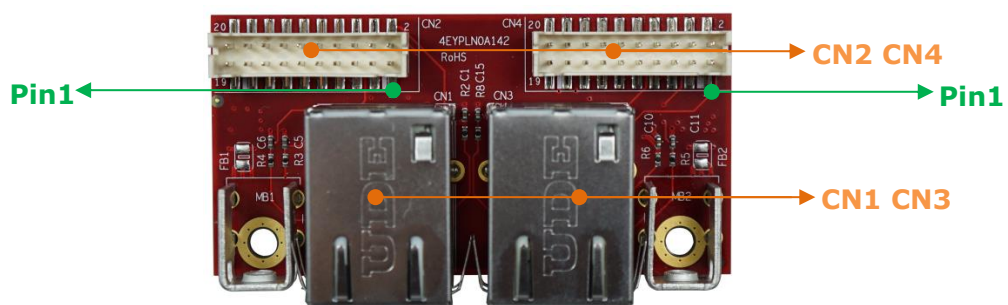
## 2.6. Hardware

### 2.6.1. Layout



**Table 7: M.2 2280 PCB Layout Legend**

Label	Connector Type	Function
<b>CN1 CN2</b>	Wire to board SMD 2*10P 180° P:2.00mm H:4.0mm	GbE LAN Signal 10/100/1000 LED Signal



**Table 8: Daughter Board PCB Layout Legend**

Label	Connector Type	Function
<b>CN1</b>	10/100/1000 Base-T RJ45 DIP 10P8C 90° LED: Green-Orange/Green	GbE LAN Port 10/100/1000 LED Indicator
<b>CN2</b>	Wire to board SMD 2*10P 180° P:2.00mm H:4.0mm	GbE LAN Signal 10/100/1000 LED Signal

<b>CN3</b>	10/100/1000 Base-T RJ45 DIP 10P8C 90° LED: Green-Orange/Green	GbE LAN Port 10/100/1000 LED Indicator
<b>CN4</b>	Wire to board SMD 2*10P 180° P:2.00mm H:4.0mm	GbE LAN Signal 10/100/1000 LED Signal

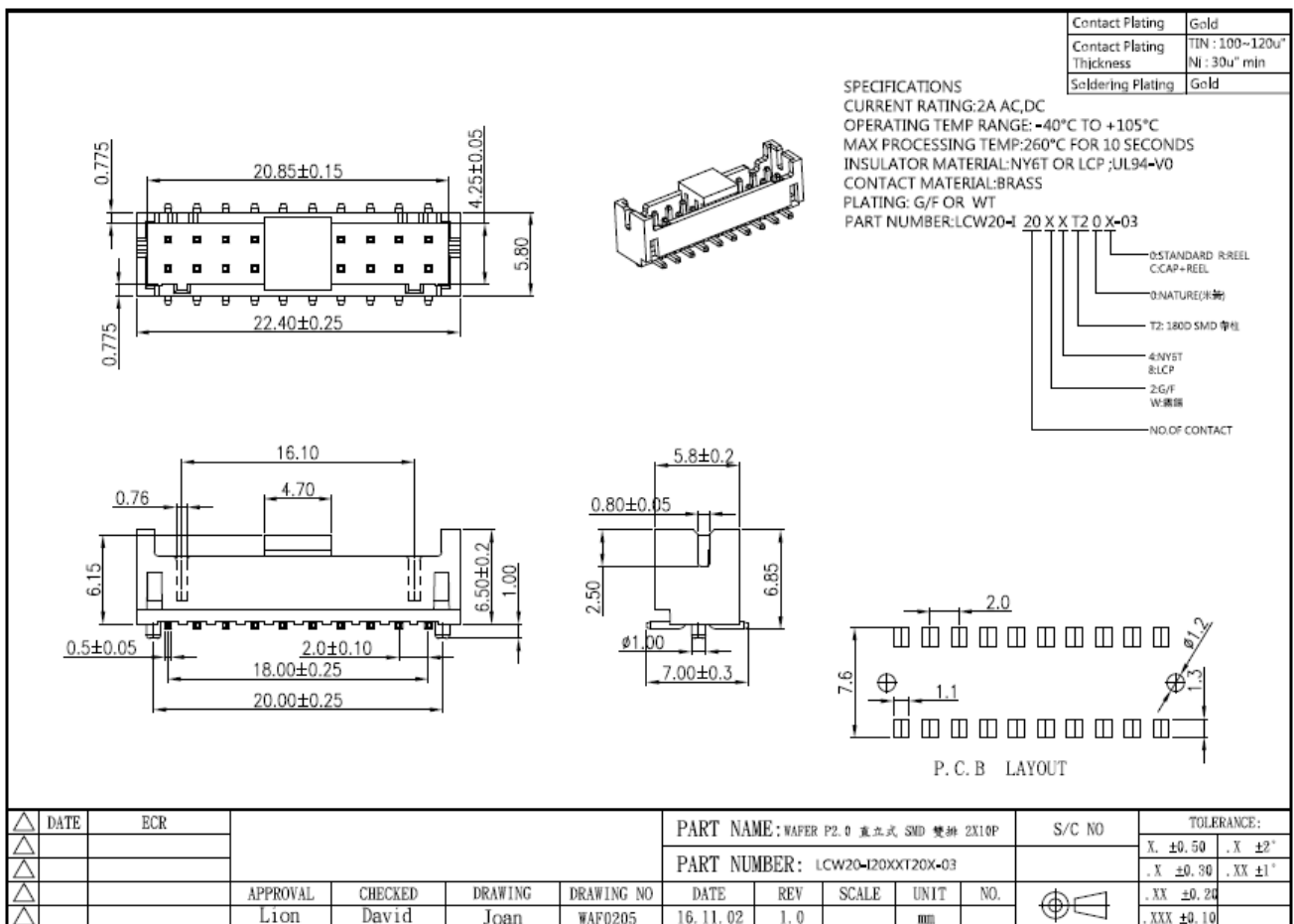
## 2.6.2. Pin Define

**Table 9: M.2 B-M Key Pin Define**

Signal Name	Pin #	Pin #	Signal Name
		<b>75</b>	NC
3.3V	<b>74</b>	<b>73</b>	GND
3.3V	<b>72</b>	<b>71</b>	GND
3.3V	<b>70</b>	<b>69</b>	NC
NC	<b>68</b>	<b>67</b>	RESET#
<b>Module Key M</b>			
NC	<b>58</b>		
NC	<b>56</b>	<b>57</b>	GND
PE_WAKE_N	<b>54</b>	<b>55</b>	CLK+
GND	<b>52</b>	<b>53</b>	CLK-
PE_RST	<b>50</b>	<b>51</b>	GND
NC	<b>48</b>	<b>49</b>	RX+
NC	<b>46</b>	<b>47</b>	RX-
NC	<b>44</b>	<b>45</b>	GND
NC	<b>42</b>	<b>43</b>	TX+
NC	<b>40</b>	<b>41</b>	TX-
NC	<b>38</b>	<b>39</b>	GND
NC	<b>36</b>	<b>37</b>	NC
NC	<b>34</b>	<b>35</b>	NC
NC	<b>32</b>	<b>33</b>	GND
NC	<b>30</b>	<b>31</b>	NC
NC	<b>28</b>	<b>29</b>	NC
NC	<b>26</b>	<b>27</b>	GND

NC	<b>24</b>	<b>25</b>	NC
NC	<b>22</b>	<b>23</b>	NC
NC	<b>20</b>	<b>21</b>	NC
<b>Module Key B</b>			
NC	<b>10</b>	<b>11</b>	GND
NC	<b>8</b>	<b>9</b>	NC
NC	<b>6</b>	<b>7</b>	NC
3.3V	<b>4</b>	<b>5</b>	GND
3.3V	<b>2</b>	<b>3</b>	GND
		<b>1</b>	NC

**2.6.3. I/O Connector Mechanical Drawing & Pin Defines**



**Figure 5: Wire to Board SMD 2\*10P Connector Drawing**

**Table 10: Wire to Board SMD 2\*10P Connector Pin Define**

<b>Signal Name</b>	<b>Pin #</b>	<b>Pin #</b>	<b>Signal Name</b>
LINK_100_N	<b>2</b>	<b>1</b>	MDI0P_IC
LINK_ACT_N	<b>4</b>	<b>3</b>	MDI0N_IC
LINK_1000_N	<b>6</b>	<b>5</b>	MDI1P_IC
GND	<b>8</b>	<b>7</b>	MDI1N_IC
GND	<b>10</b>	<b>9</b>	MDI2P_IC
GND	<b>12</b>	<b>11</b>	MDI2N_IC
3.3V	<b>14</b>	<b>13</b>	MDI3P_IC
3.3V	<b>16</b>	<b>15</b>	MDI3N_IC
NC	<b>18</b>	<b>17</b>	NC
NC	<b>20</b>	<b>19</b>	NC

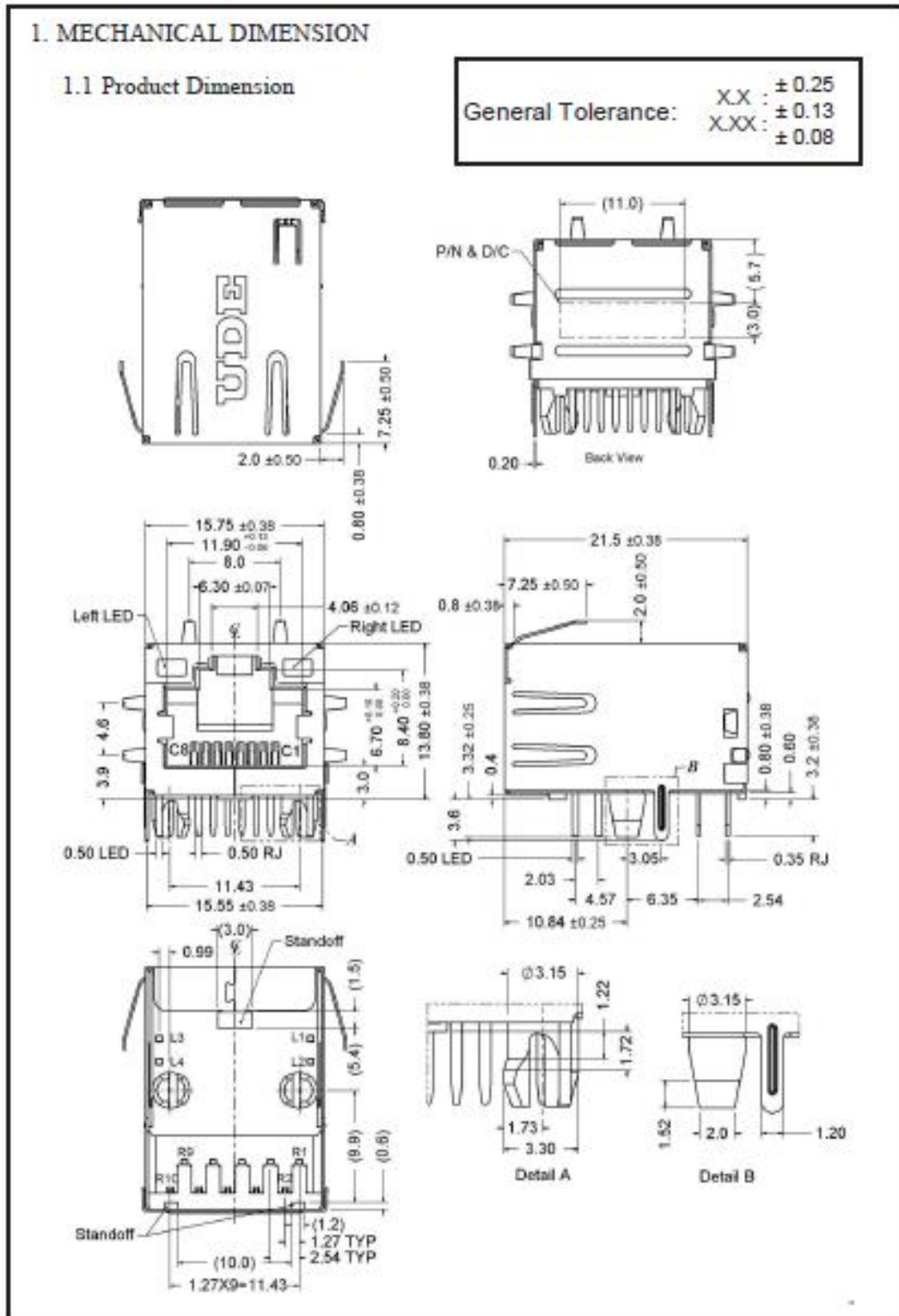
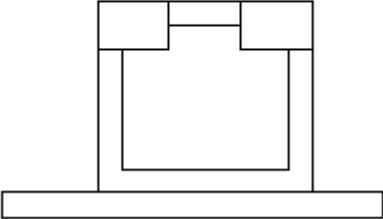


Figure 6: RJ45 Connector Drawing

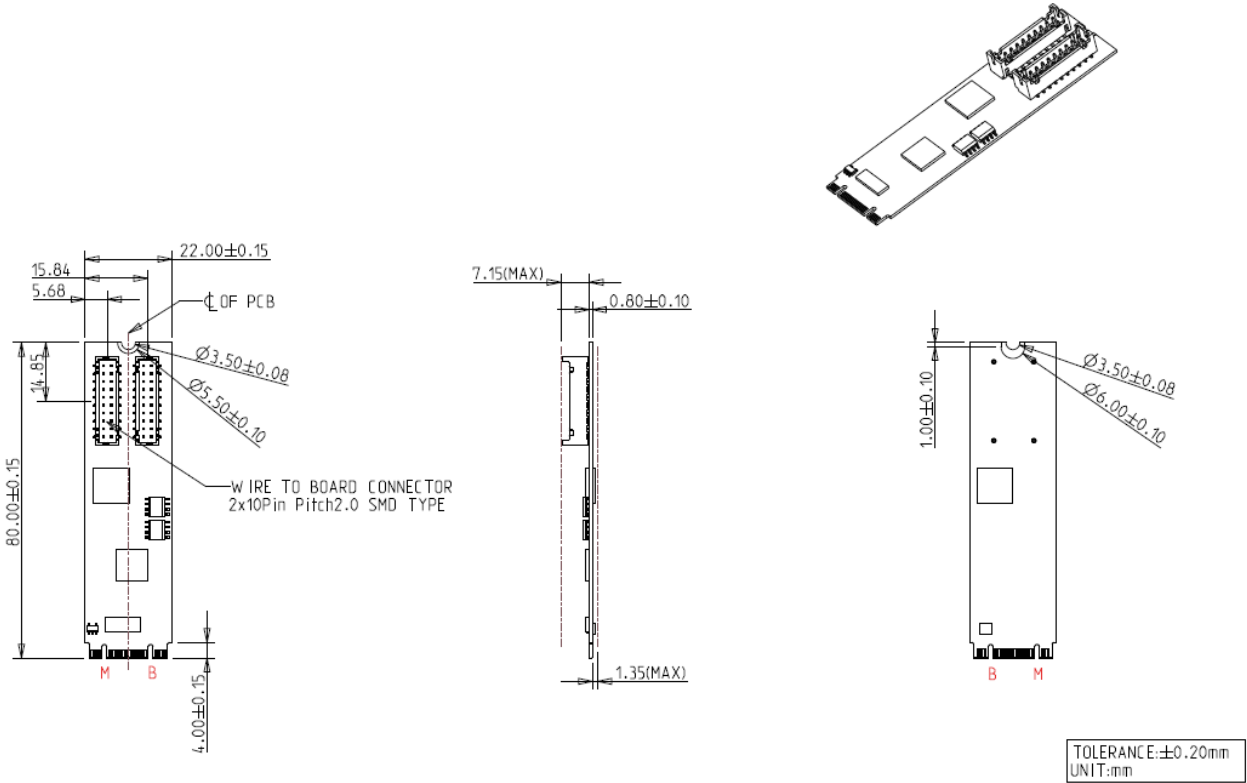
**Table 11: RJ45 LAN LED Table**

Orange /Green      Green



Speed	Orange/Green (Status)	Green (Active/Link)
<b>10M</b>	OFF	Flash
<b>100M</b>	ON (Green)	Flash
<b>1G</b>	ON (Orange)	Flash

**2.6.4. EGPL-G201 Mechanical Drawing**



**Figure 7: EGPL-G201 M.2 Board Drawing**

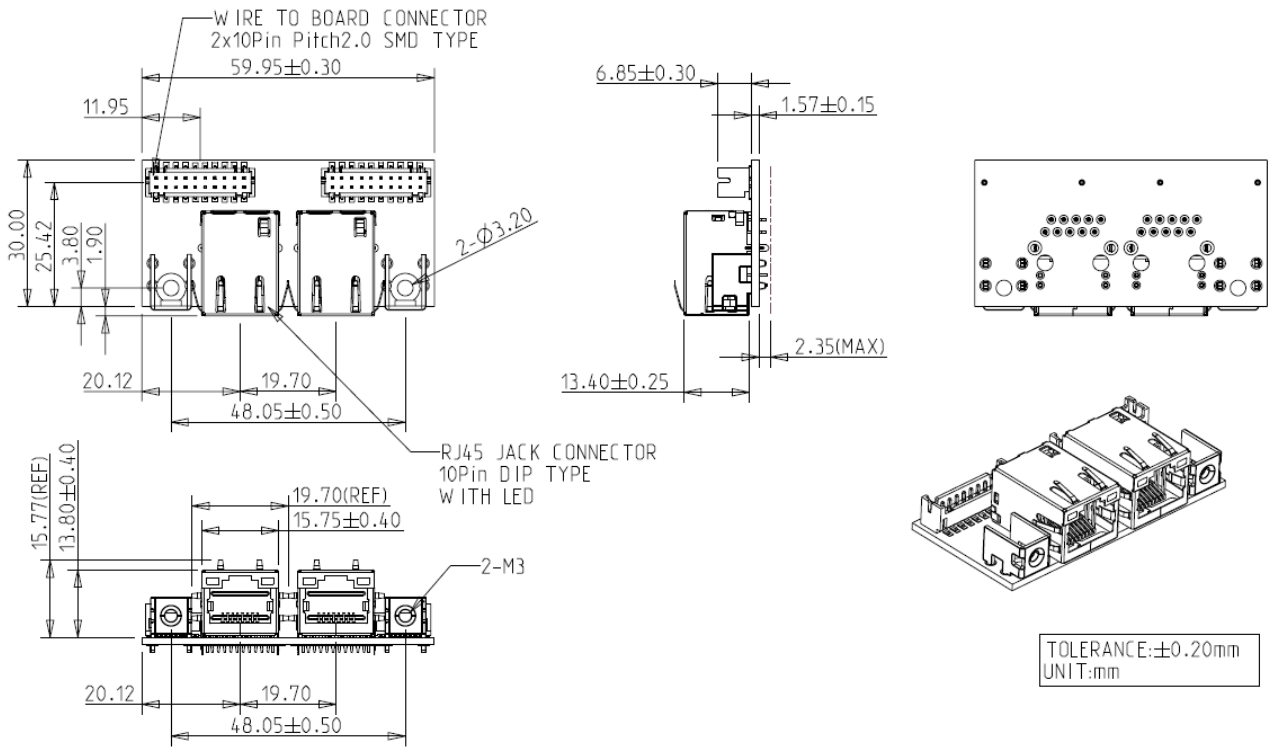


Figure 8: Mounting Hole Daughter Board Drawing (EGPL-G201-C1/W1)

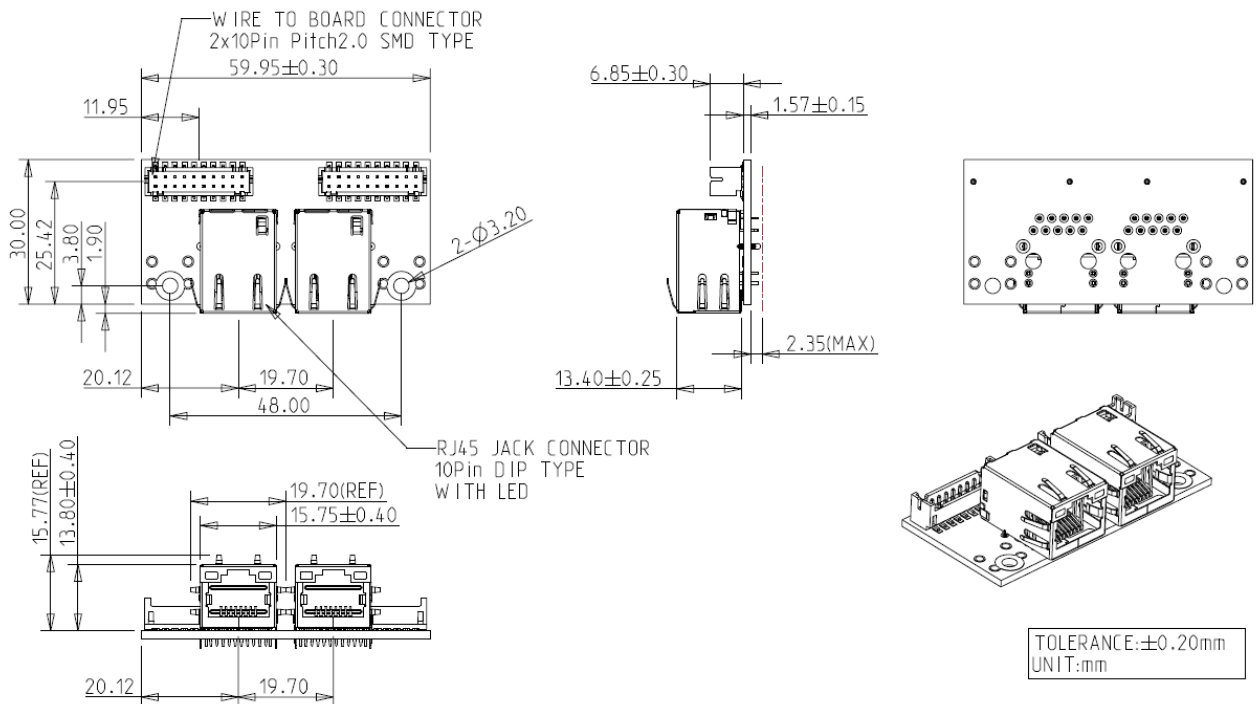


Figure 9: Bracket Daughter Board Drawing (EGPL-G201-C2/W2)



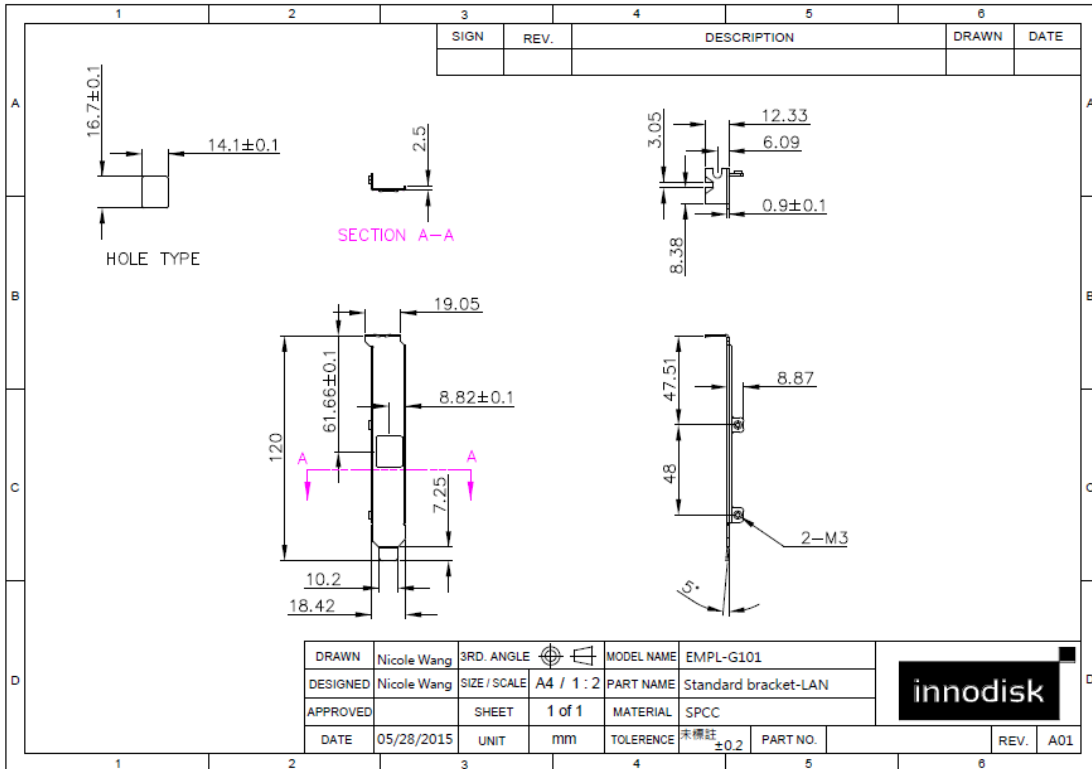


Figure 10: Bracket Drawing

2.6.5. Cable Mechanical Drawing

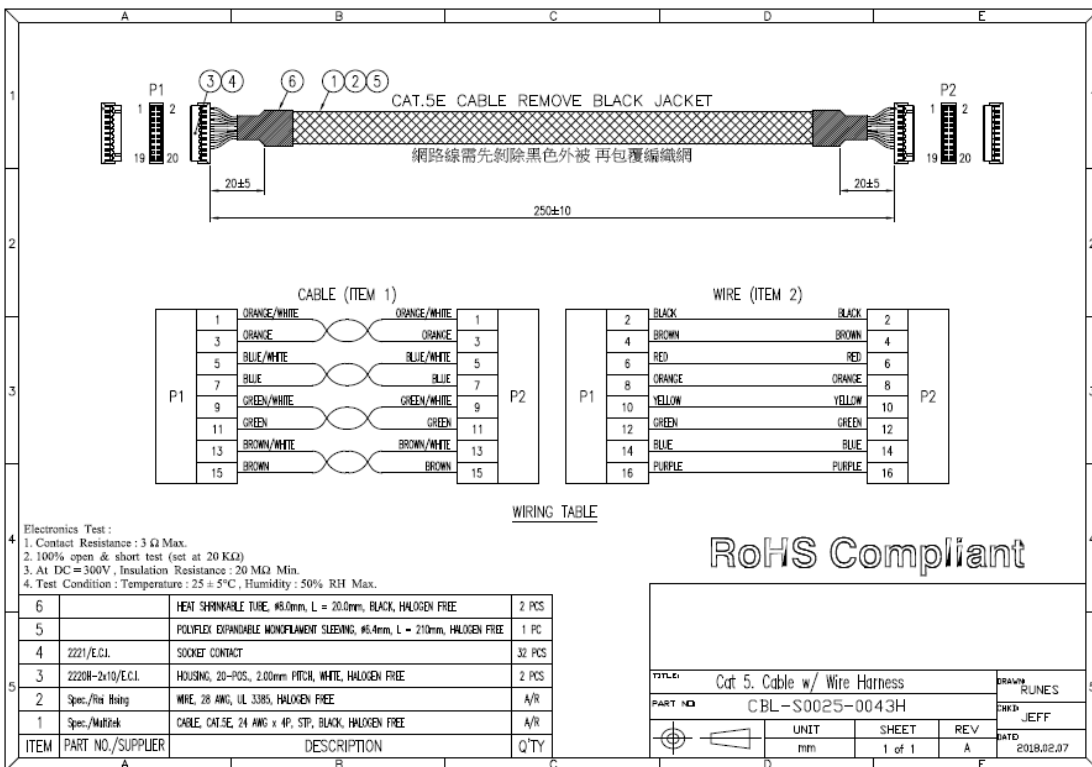


Figure 11: Board to Board LAN Cable Drawing

### 2.6.6. Packing List

- EGPL-G201 M.2 Board x 1
- EGPL-G201 Daughter Board x 1
- Board to Board LAN Cable x 2
- Bracket x 1 (EGPL-G201-C2/W2 only)
- Screw M3\*5 Silver x 2 (EGPL-G201 C2/W2 only)

### 2.7. Software Support

- Windows: XP(32bit), 7(32/64bit), 8/8.1(32/64 bit), 10(32/64bit)
- Linux: Kernel 2.4 above.

## 3. Installation Guide

Please download driver from Myinnodisk web site.

<https://myinnodisk.innodisk.com/myinnodisk/Login.aspx>

Or you can download intel i210 chip driver from intel official web site directly.

<https://downloadcenter.intel.com/product/64399/Intel-Ethernet-Controller-I210-Series>

## 4. Appedix

innodisk

### 宜鼎國際股份有限公司 Innodisk Corporation REACH Declaration

Tel:(02)7703-3000 Fax:(02) 7703-3555 Internet: <https://www.innodisk.com/>

Innodisk Corporation pursues its social responsibility for global environmental preservation by committing to be compliant with REACH regulation (REGULATION (EC) No 1907/2006). We hereby confirm that the product(s),

**Scope: Flash Memory, DRAM Module and Embedded Peripherals Products.**

- The standard products of **not listed** in the **Appendix2** meet the requirements of REACH SVHC regulations(SVHCs < 0.1% in Article), as described in the candidate list table currently including 240 substances (release date: 23-JAN-2024) and shown on the ECHA website. <https://echa.europa.eu/candidate-list-table>
- The standard products listed in the **Appendix2** contain(s) one or more hazardous substances or constituents exceeding 0.1 % by weight in article if not otherwise specified in candidate list table.  
Where the threshold value is exceeded, the substances in question are to be declared in accompanying. (SVHCs > 0.1% in Article).
- Comply with REACH Annex XVII.



#### Guarantor

Company name 公司名稱： Innodisk Corporation 宜鼎國際股份有限公司

Company Representative 公司代表人：  Yichuan Chen 陳怡全

Company Representative Title 公司代表人職稱：Quality Assurance Div. SR. Manager 品保處經理

Date 日期：2024 / 02 / 19

## RoHS 自我宣告書 (RoHS Declaration of Conformity)

### Manufacturer Products: All Innodisk EM FLASH, DRAM and EP products

- 一、 宜鼎國際股份有限公司（以下稱本公司）特此保證售予貴公司之所有產品，皆符合歐盟 2011/65/EU 及 (EU) 2015/863 關於 RoHS 之規範要求。  
Innodisk Corporation declares that all products sold to the company, are complied with European Union RoHS Directive (2011/65/EU) and (EU) 2015/863 requirement.
- 二、 本公司同意因本保證書或與本保證書相關事宜有所爭議時，雙方宜友好協商，達成協議。  
Innodisk Corporation agrees that both parties shall settle any dispute arising from or in connection with this Declaration of Conformity by friendly negotiations.
- 三、 本公司聲明我們的產品符合 RoHS 指令的附件中 7(a)、7(c)-I、6(c) 允許豁免。  
We declare, our products permitted by the following exemptions specified in the Annex of the RoHS directive.
- ※ 7(a) Lead in high melting temperature type solders (i.e. lead-based alloys containing 85% by weight or more lead).
  - ※ 7(c)-I Electrical and electronic components containing lead in a glass or ceramic other than dielectric ceramic in capacitors, e.g. piezoelectric devices, or in a glass or ceramic matrix compound.
  - ※ 6(c) Copper alloy containing up to 4% lead by weight. (This exemption applies to products that use antennas)

Name of hazardous substance	Limited of RoHS ppm (mg/kg)
鉛 (Pb)	< 1000 ppm
汞 (Hg)	< 1000 ppm
鎘 (Cd)	< 100 ppm
六價鉻 (Cr 6+)	< 1000 ppm
多溴聯苯 (PBBs)	< 1000 ppm
多溴二苯醚 (PBDEs)	< 1000 ppm
鄰苯二甲酸二(2-乙基己基)酯 (DEHP)	< 1000 ppm
鄰苯二甲酸丁酯苯甲酯 (BBP)	< 1000 ppm
鄰苯二甲酸二丁酯 (DBP)	< 1000 ppm
鄰苯二甲酸二異丁酯 (DIBP)	< 1000 ppm

宜鼎國際股份有限公司  
Innodisk Corporation

立 保 證 書 人 (Guarantor)

Company name 公司名稱： Innodisk Corporation 宜鼎國際股份有限公司

Company Representative 公司代表人： 簡川勝

Company Representative Title 公司代表人職稱： Chairman 董事長

Date 日期： 2023 / 06 / 14





## Statement of Conformity

**Issued Date: Sep. 15, 2023**  
**Report No. : 2380501R-0E3012100115-A**

This is to certify that the following designated product

**Product** : M.2 2280 to Dual GbE LAN module  
**Trademark** : Innodisk  
**Model Number** : EGPL-G#01  
**#: 1: 1port; 2: 2port**  
**Company Name** : Innodisk Corporation

This product, which has been issued the test report listed as above in DEKRA Testing and Certification Co., Ltd. Laboratory, is based on a single evaluation of one sample and confirmed to comply with the requirements of the following EMC standard.

**EN 55032:2015/A1:2020, Class B**    **EN 55035:2017/A11:2020**  
**IEC 61000-4-2 Ed. 2.0:2008**  
**IEC 61000-4-3 Ed. 4.0:2020**  
**IEC 61000-4-4 Ed. 3.0:2012**  
**IEC 61000-4-6 Ed. 4.0:2013**  
**IEC 61000-4-8 Ed. 2.0:2009**

TEST LABORATORY

Vincent Lin / Director

**DEKRA Testing and Certification Co., Ltd.**  
 No. 5-22, Ruishukeng, Linkou Dist., New Taipei City 24451, Taiwan  
 TEL: +886-2-8601-3788 FAX: +886-2-8601-3789 Email: [info.tw@dekra.com](mailto:info.tw@dekra.com) <http://www.dekra.com.tw>



## Statement of Conformity

**Issued Date: Sep. 15, 2023**  
**Report No. : 2380501R-0E3012110014-A**

This is to certify that the following designated product

**Product** : M.2 2280 to Dual GbE LAN module  
**Trademark** : Innodisk  
**Model Number** : EGPL-G#01  
#: 1: 1port; 2: 2port  
**Company Name** : Innodisk Corporation

This product, which has been issued the test report listed as above in DEKRA Testing and Certification Co., Ltd. Laboratory, is based on a single evaluation of one sample and confirmed to comply with the requirements of the following EMC standard.

**FCC CFR Title 47 Part 15 Subpart B:2021, Class B**

TEST LABORATORY

A handwritten signature in black ink, appearing to read 'Vincent Lin'.

Vincent Lin / Director

**DEKRA Testing and Certification Co., Ltd.**

No. 5-22, Ruishukeng, Linkou Dist., New Taipei City 24451, Taiwan  
TEL: +886-2-8601-3788 FAX: +886-2-8601-3789 Email: [info.tw@dekra.com](mailto:info.tw@dekra.com) <http://www.dekra.com.tw>

# Contact us

## Headquarters (Taiwan)

5F., No. 237, Sec. 1, Datong Rd., Xizhi Dist., New Taipei City 221, Taiwan

Tel: +886-2-77033000

Email: sales@innodisk.com

## Branch Offices:

### USA

usasales@innodisk.com

+1-510-770-9421

### Europe

eusales@innodisk.com

+31-40-3045-400

### Japan

jpsales@innodisk.com

+81-3-6667-0161

### China

sales\_cn@innodisk.com

+86-755-2167-3689

**[www.innodisk.com](http://www.innodisk.com)**

© 2020 Innodisk Corporation.

All right reserved. Specifications are subject to change without prior notice.

September 23, 2024