

ID00H-215-PC

Outdoor Panel PC

21.5" Outdoor Sunlight Readable Panel PC
with AMD Ryzen™ Embedded V1605B Processor

Outdoor Series 21.5"

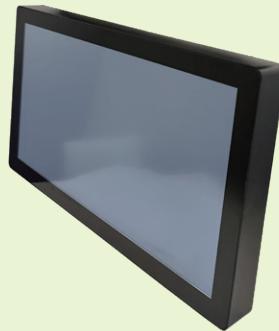


I/O View

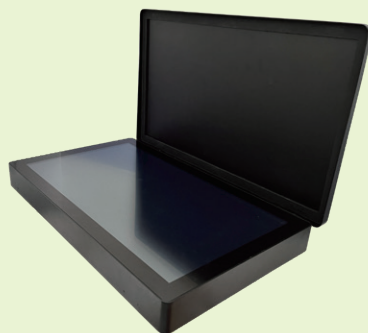


Features

- 21.5" true-flat FHD LCD panel with projected capacitive touchscreen
- Sunlight readable



- Protection front side lid design (Panel Cover)
- Fully IP65 waterproof protection
- Vandal-proof IK09 with lid



- M12 Waterproof connector



M12 17P connector,
integrated with LAN port
and DC-in

1x USB 2.0 Type A
water-proof screw
base and cap

1 x HDMI with water-proof
screw base and cap

- Automatic air flow speed and system temperature balance system



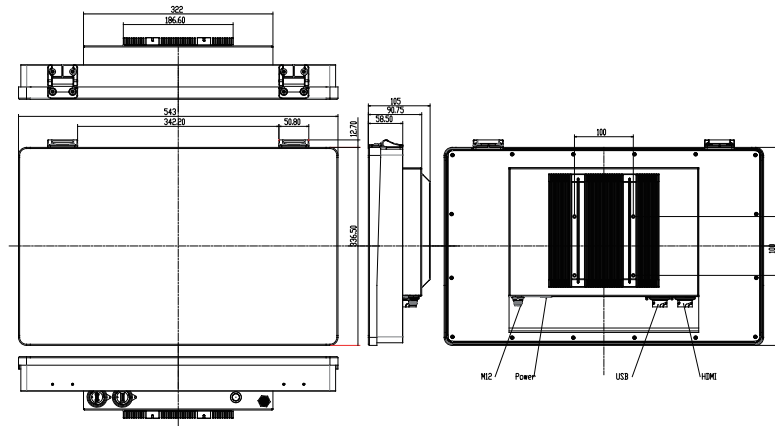
ID00H-215-PC

Display & Touch Screen	Display Size	21.5" TFT-LCD
	Max. Resolution	1920 x 1080
	Luminance (cd/m ²)	Up to 1300nits, before touch screen
	Contrast	3000:1
	Max. Color	16.7M
	View Angle (H°/V°)	178/178
	Backlight Lifetime(hrs)	50,000hrs
	Touch Type	Projected Capacitive Touch
	Touch Interface	USB
	Light Transmission (%)	> 70%
	Point of touch	10
System	Processor	AMD Ryzen™ Embedded V1605B (Quad-Core @ 3.6GHz)
	Memory	2x DDR4 SO-DIMM, up to 32GB, default DDR4 8GB (4GBx2)
	Thermal Design	Fan
	Membrane Control	None
	Built-in Speaker/Mic	None
I/O Interface	USB 3.0	None
	USB 2.0	1x USB 2.0 Type A water-proof screw base and cap
	RS-232/422/485 Selectable in BIOS	None
	RS-232	None
	LAN	1x M12 17P connector, integrated with LAN port
	Additional Graphics	1x HDMI with water-proof screw base and cap
	Audio	None
	Digital I/O	None
	Power Connector	AC inlet
	Power Button	IP67 push button
Expansion	Internal Expansion Bus	1x M.2 (M-key, type:2280, NVMe)
	Expansion Slot	1x M.2 (E-key, type:2230)
	Wireless	None
Storage Space	HDD	1x 2.5" SATA
	Removable	None
Power	Power Input Range	90V ~ 240V AC
Mechanical	Dimensions (mm)	543 x 349.2 x 105 (w/ Lid) 535 x 329 x 98.5 (w/o Lid)
	Net Weight (kgs)	8.1(w/ Lid)
Construction	Chassis Material	Aluminum chassis
	Color (Front/Back)	Black/Black
	IP Rating	IP65 waterproof protection
	Mounting	VESA 100x100mm
Environmental	Operating Temperature	-5°C~45°C
	Storage Temperature	-20°C~80°C
	Storage Humidity	10%~90% @40°C (non-condensing)
	Certification	CE/FCC Class-B
	Supported Operating Systems	Windows 10 IoT core/ Linux 4.X+ kernel

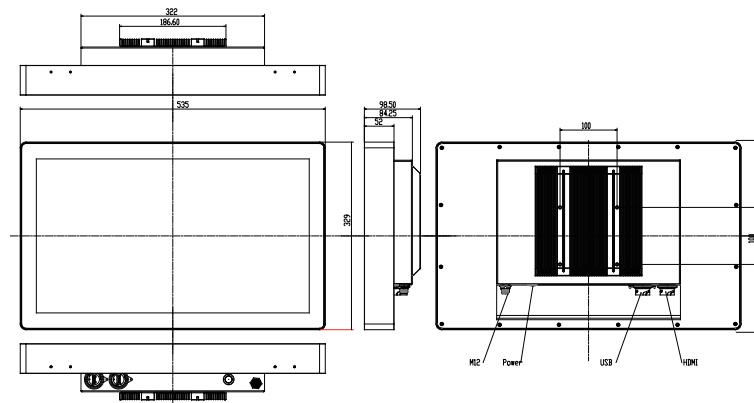
IDOOH-215-PC

Dimensions

IDOOH-215-PC with Panel Cover



IDOOH-215-PC_without Panel Cover



Ordering Information

IDOOH-215-PC

21.5" 1,300 nits 21.5" Panel PC, AC Adaptor 19V 120W, 220CM M12 Cable for DC-in and RJ45
AMD Ryzen™ Embedded V1605B Processor 2.0Ghz, projected touch, DDR4 8GB, 64GB 3DTLC SATA3 SSD