

# SMARTCASE™ S502

## Chassis Kit Solution



Mini-STX Motherboard  
K4021-U

FOR

### Industrial chassis for enhanced operating temperature range

- Ultra-Compact Design
- 36 x 147 x 165 mm
- Front & Rear USB
- VESA- and Wall Mount Option
- Security Feature: Chassis Intrusion Option

CHASSIS DATA	DIMENSIONS COLOUR WEIGHT	36 x 147 x 165 mm (W x H x D) black ~ 0.4 kg
ENVIRONMENTAL CONDITIONS	OPERATING TEMPERATURE*	Active Cooling: -10°C ... +45°C (max. 15W TDP) -10°C ... +35°C (max. 28W TDP)
	HUMIDITY	5% - 85% relative humidity (non-condensing)
APPROVALS & CERTIFICATIONS	EMC	Verified for CE Class B, Industrial Immunity (EN 61000-6-2) Verified for FCC-B/ICES-003
PACKAGE CONTENT		Chassis desk stand (vertical mode, removable) Rubber feet (horizontal mode, removable) Chassis bottom/top incl. front bezel; Rear I/O with integrated EMI gasket
CHASSIS FEATURES	THEFT PROTECTION  MOUNTING OPTIONS	Kensington lock support Mechanical lock for DC-In connector (DC-in holder; optional) Intrusion support (optional) Integrated WLAN antennas Wall Mount VESA Kit Cooling solution Rear COM port
REQUIREMENTS FOR AC ADAPTER	SAFETY	Compliance with IEC 62368-1 according clause 6.2.2. to power source category PS2 ("Limited Power Source") required!

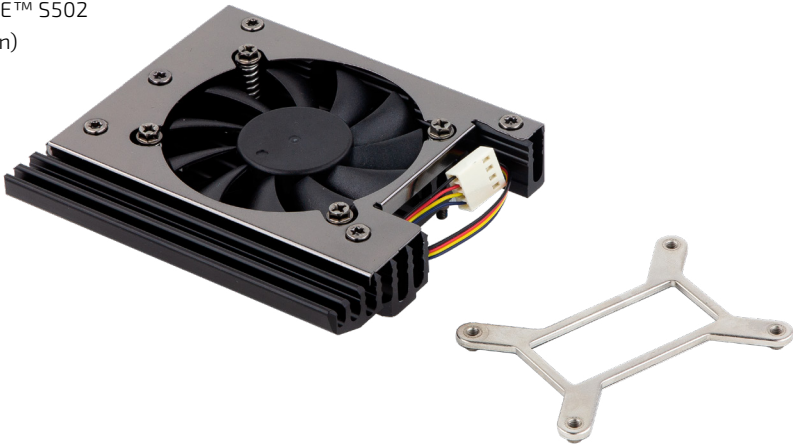
\* Chassis ambient temperature; upper limit depends on system configuration

\*\* (Tbd.) Thermal approval pending. Vertical operating position recommended for most favorable cooling & system performance



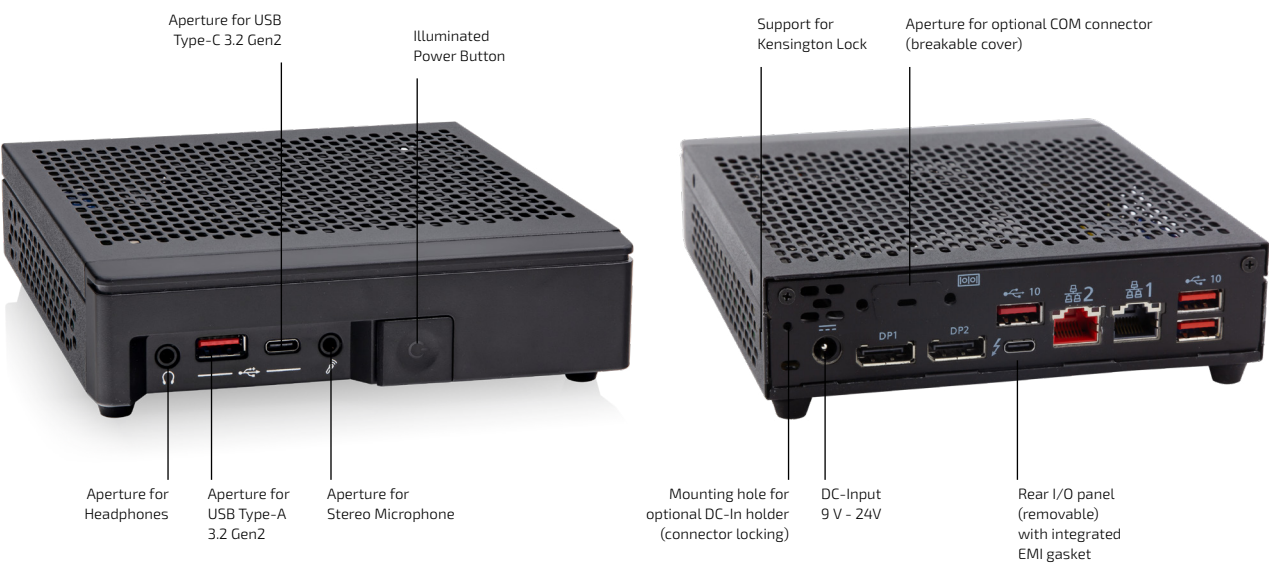
F5000-C027

- Specific active heatsink designed for SMARTCASE™ S502
- 15W TDP (up to 28W - depending on use condition)
- Weight ~ 200 g



Chassis Front/Rear View (Horizontal Position)

Motherboard K4021-U installed



Overview Chassis Configuration/Options

	K4021-U
SMARTCASE™ S502	yes
Chassis Rear Wall (2x DP, 1x Thunderbolt™ 4, 3x USB-A, COM, 2x LAN)) included in chassis kit	yes
Passive Cooling supported	no
Active Cooling (F5000-C027) supported	yes
Rear COM Port Option S26361-F5000-K007 supported	yes
2nd LAN Port supported	yes
Chassis Intrusion switch F5000-K017 supported	yes

ARTICLE	PART NO.	DESCRIPTION
SMARTCASE™ S502	F5000-J015	10x chassis kit

## Accessories

WALLMOUNT BRACKETS	S26361-F5000-X001	2x Brackets per chassis incl. screws
VESA MOUNTING KIT	S26361-F5000-X002	VESA adapter incl. mounting screws
DC-IN HOLDER	S26361-F5000-X003	Holder incl. screws
AC ADAPTER 19V / 65W	S26361-F5000-P006	AC Adapter, 19 V/3.4 A, 65 W
INTERNAL WLAN ANTENNA KIT	S26361-F5000-W005	WLAN antenna kit; left (grey)/right (black) antennas incl. cable. M.2 WLAN module not included!
INTERNAL WLAN ANTENNA KIT	F5000-W006	Box contains 10 dual antennas (incl. antenna cable) for SMARTCASE™ S5xx series. Additional support for WiFi 6E/WiFi 7; replaces F5000-W005
INTERNAL REAR COM PORT CABLE	S26361-F5000-K007	w/o slot bracket, length = 120 mm, 2 mm pitch internal connector
CHASSIS INTRUSION KIT FOR SC-S5XX	F5000-K017	Contains 20x chassis intrusion cable plus 20x mounting bracket for SMARTCASE™ S5xx
HEATSINK	F5000-C027	Active Cooler K402x incl. Backplate for SMARTCASE™ S502

## Global Headquarters

Kontron Europe GmbH

Gutenbergstraße 2  
85737 Ismaning, Germany  
Tel.: + 49 821 4086-0  
info@kontron.com

www.kontron.com