



PCI Express 2.5G BASE-T Network POE Card

User Manual

Ver.1

For latest manual and driver update:
Please visit <https://www.sunix.com> by searching "LAN1225P".

Introduction

SUNIX Network POE Card is based on 2.5G Base-T which meets the high bandwidth requirement. Equipped with intel i225 network chip, it allows enterprise users to expand the intel vPro capability for various network applications. Designed for IEEE 802.3 at the max. Output for network port is up to 30W. It is very easy to deploy the network environments with one network cable and no external power required. With isolation design, this card can ensure the safety of the system and the preservation of data when a lightning strike occurs.

Features

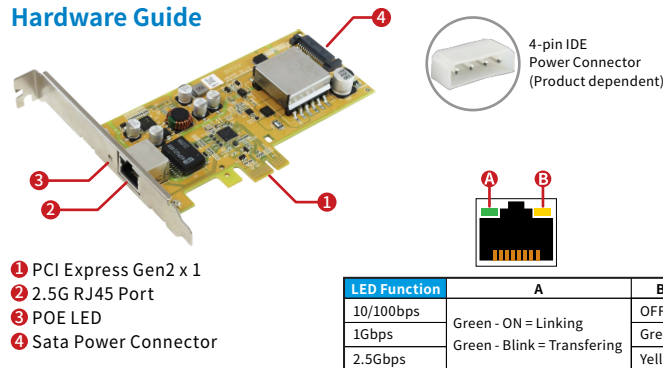
- Integrated MAC/PHY supporting 10BASE-T, 100BASE-TX, 1000BASE-T & 2500BASE-T 802.3 spec.
- Support 1-Lane 5Gbps PCI Express Bus
- Transmit/Receive on-Chip buffer support
- Advanced Power Management (APM) Support-[formerly Wake on LAN.
- Advanced Configuration and Power Interface (ACPI) specification v2.0c.
- Support intel vPRO.
- Support ASPM L0s
- Support IEEE 802.3AF/AT
- 2K isolation input to output.

Package Checklist

Please check if the following items are present and in good condition upon opening package. Contact your vendor if any item is damaged or missing.

- LAN1225P Series - PCI Express 2.5G BASE-T Network POE Card
- Low profile bracket

Hardware Guide



Specification

| | | | |
|---------------|--|-----------------------|--|
| Model | LAN1225P Series | Operating Environment | |
| Description | PCI Express 2.5G Network Card | Temperature | 0 to 60 °C (32 to 140 °F) |
| Chipset | Intel i225LM | Humidity | < 85% non-condensing |
| Interface | PCI Express Gen2 x1 | Storage temp. | -10 °C ~ 85 °C (14~176°F) |
| Port | RJ45 (2.5GbE) x 1 | Regulatory Approvals | |
| Standard | IEEE 802.3, IEEE 802.3u, IEEE 802.3x, IEEE 802.3ab/az/bz IEEE 802.1Q VLAN Tagging, IEEE 802.1ad Double VLAN | EMC | EUR: CE, US: FCC, Japan: VCCI, TAIWAN: BSMI |
| Network Media | 10BASE-T: UTP category 3, 4, 5 cable (maximum 100m) 100BASE-TX: UTP category 5, 5e cable (maximum 100m) 1000Base-T: UTP category 5, 5e cable (maximum 100m) 2500Base-T: UTP category 5e, 6 cable (maximum 100m) | Green | RoHS, WEEE, REACH |
| Data Rates | 10/100/1000/2500Mbps | Dimension | |
| O.S Support | Windows 7 / 8.x / 10 (X86/X64) Windows Server 2008 / 2012 / 2016 / 2019 (X64) Linux v2.4 kernel or higher | PCB Dimension | 130 * 68 * 1.6 mm |
| | | Bracket | Standard 120 mm Low Profile 80 mm |
| | | Bracket Space | 1 |

POE Specifications

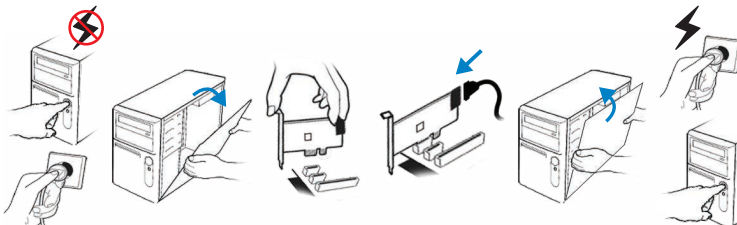
| | |
|---------------------|---|
| POE+ Feature | <ul style="list-style-type: none">Supports IEEE 802.3at Power Sourcing Equipment (PSE)Operates from a 50 V supplyProvides PD real-time protection through the following mechanisms: overload, under-load, over-voltage, over-temperature, and short-circuit.Auto mode - allows turning PDs on and off automatically. |
| Power Input Options | <ul style="list-style-type: none">2 power input options (Priority: SATA pin power > PCIe bus power): · SATA or 4-Pin Power:12V· PCIe Bus: 12V |

Hardware Installation

The hardware installation of PCIe Serial board is easy to carry out. Before inserting the card into the PCIe Express bus, please follow the detailed steps given below to install the PCIe Serial board in your computer.

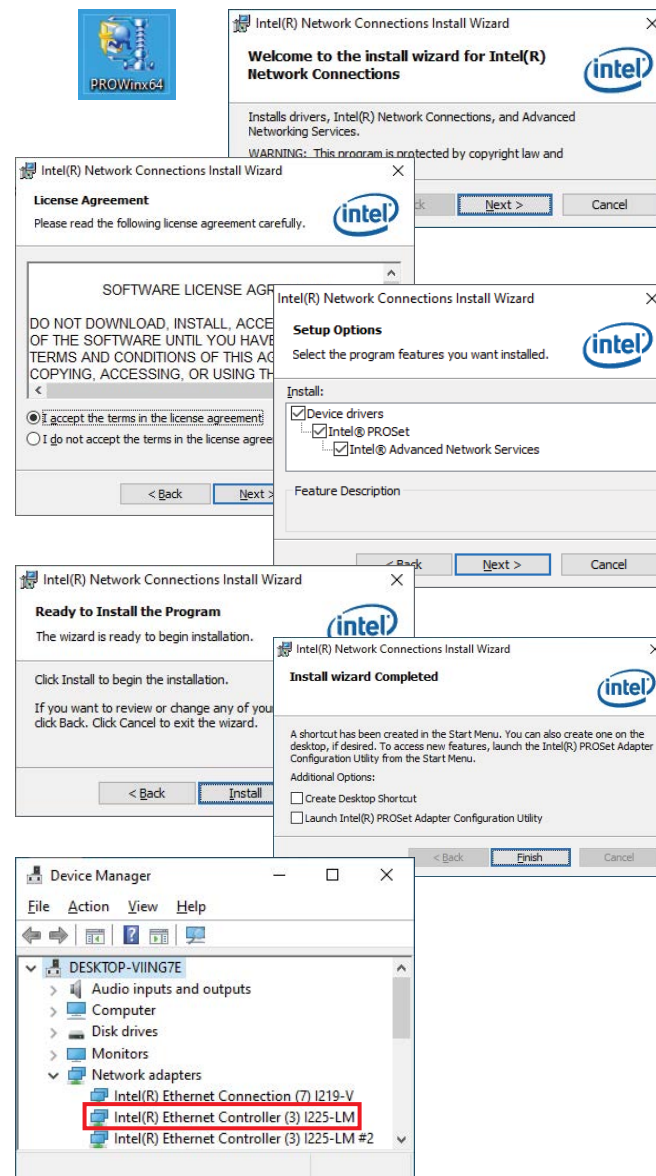
SAFETY FIRST To avoid damaging to the computer, make sure to remove any power connection before card installation.

- Step 1:** Turn your PC's power off, and shut off the power to any peripheral.
- Step 2:** Remove the power plug from the plug socket.
- Step 3:** Remove the cover from the computer case.
- Step 4:** If fitted. Remove the metal cover plate on the rear of a free PCI-E slot.
- Step 5:** Insert PCI Express Serial Communication Card into the free PCI-E slot and screw it firmly on the bracket side.
- Step 6:** Plug-in the power cable to the Card.
- Step 7:** Place the cover back onto the computer.
- Step 8:** Insert the plug into the plug socket.



Driver Installation

SUNIX LAN1225P PCI Express 2.5G Network card supports Windows and Linux operation system. Users can install the driver via the latest driver from official SUNIX website.

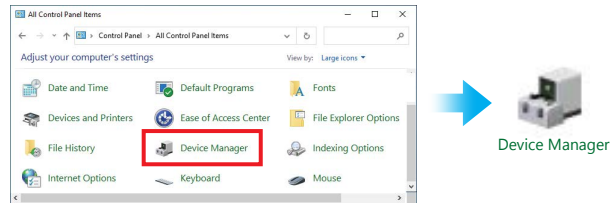


Hardware Verify

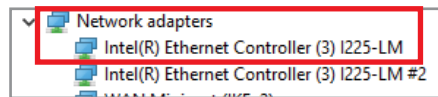
To make sure network card installed ready, user can verify in the device manager.

(1). Click on the "Device Manager" tab in the Windows Control Panel

Start > Control Panel > Device Manager



(2). Please entry "Network adapters" catalog, and "Intel(R) Ethernet Controller (3) I225-LM" shows in the device manager.

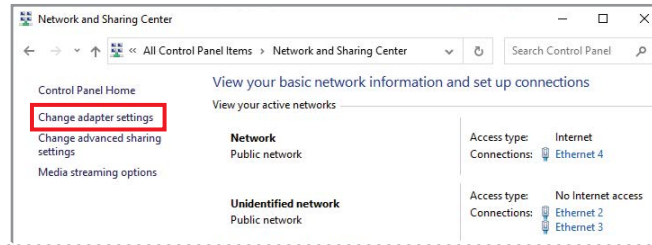
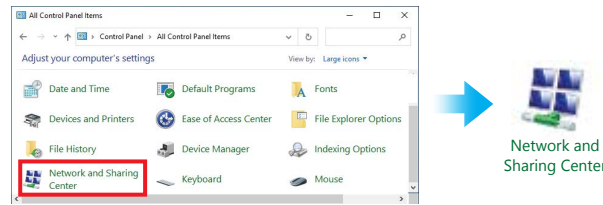


Network Setting

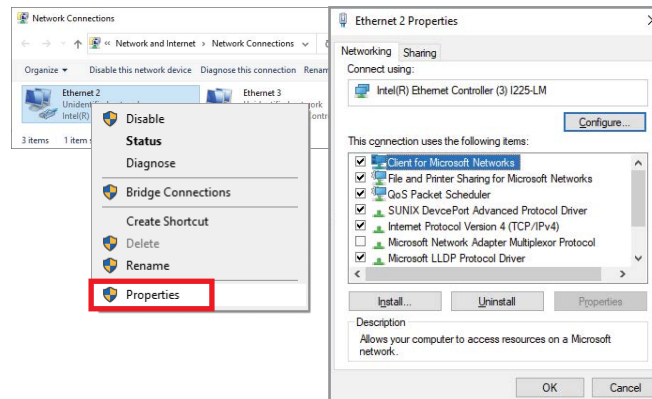
User can set 2.5G networking setting from the following instructions.

(1). Click on the "Network and Internet" tab in the Windows Control Panel

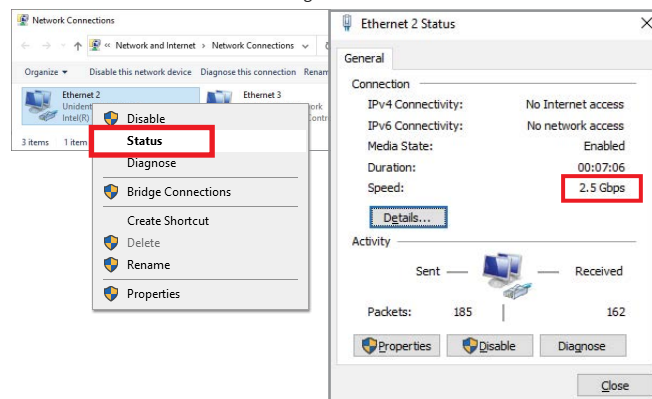
Start > Control Panel > Network and Internet > Network and Sharing Center



(2). Right click the "Ethernet" adapter and select "Properties" to set network settings.



(3). Right click the "Ethernet" adapter used by the network card, and select "Status" from the menu to affirm network settings.



Connection

· To ensure the better transfer performance, please use the CAT5E or higher grade network cable.

· If you'd like to use POE function, please make sure that the device is capable of supporting POE.

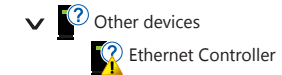
· The power indicator goes on when POE card supplies power to device successfully.

Troubleshooting

Q 1. My computer can NOT detect Network Ethernet card.

Ans: a. Make sure the network card is correctly plugged into PCI Express slot.
If not, turn off your computer and try another PCI Express slot.
b. If the network card is plugged correctly, please check card's golden connectors (finger) is clean; if not, clean golden connectors (finger) surface by eraser.
c. Please upgrade your motherboard BIOS to the latest version.
d. If above operations are useless, please try another PC desktop to check board itself is workable or not.

Q 2. How to deal with yellow exclamation mark on Ethernet Controller?



Ans: If there's an Ethernet Controller shows yellow exclamation mark in the device manager, please try to re-install driver again by following driver installation guide. If problem still happens, please try install network card into another PCI Express slot.

Q 3. I cannot get 2.5G Ethernet transfer performance.

Ans: Please make sure your networking environment supporting 2.5G hardware infrastructure, including Ethernet Switch and category 5e or higher level cable.

Q 4. How to configure 10/100/1000/2500 Ethernet settings?

Ans: PCIe Networking card is able to automatically sense and operate on either speed without manual reconfiguration. Just connect the correct Ethernet cable between PCIe card and Networking Switch or router, and then user would get the best performance.

Q 5. How to check POE feature?

Ans: a. Please ensure that your device support POE power input.
b. After you connect your device to our card, POE LED on.

Copyright©2021 SUNIX Co., Ltd. All Rights Reserved. No part of this publication may be reproduced, transcribed, stored in a retrieval system, translated into any language, or transmitted in any form or by any means, photocopying, manual, or otherwise, without prior written permission from SUNIX Co., Ltd. SUNIX Co., Ltd. shall not be liable for any incidental or consequential damages resulting from the performance or use of this equipment. SUNIX Co., Ltd. makes no representations or warranties regarding the contents of this manual. Information in this manual has been carefully checked for reliability; however, no guarantee is given as to the correctness of this content. In the interest of continued product improvement, this company reserves the right to revise the manual or include amendments in the specifications of the product described within it at any time without notice and without obligation to notify any person of such revision or changes. The information contained in this manual is provided for general use by the customers. Trademarks - SUNIX is a registered trademark of SUNIX Co., Ltd. Other registered marks used herein are for identification purposes only and may be trademarks of their respective owners. BSMI 聲明 - 限用物質含有情況標示資訊網站請參考下列網址: <https://www.sunix.com.tw> 操作說明: 選擇頁面之產品/型號/文件下載區(RoHS文件)。

E-mail for technical support: info@sunix.com

Product information: www.sunix.com

Tel: +886-2-8913-1987

Fax: +886-2-8913-1986

Made in China 771-LAN1225P0-S01

