

CAN-E2102SI

PCIe to 2-port CAN FD Card
With Surge and Isolation



Introduction

SUNIX CAN-E2102SI, industrial PCIe to 2-port isolated high speed CAN FD communication card, is designed for Edge Computer that enables CAN FD and CAN bus data communication capability for electric vehicle industry application. This board not only built-in SUNIX CAN FD controller but also built with many of SUNIX advanced features and technologies. In addition, SUNIX provides Windows and SocketCAN drivers, allowing users to use this card on Windows and Linux operating systems. SUNIX CAN-E2102SI card enriches CAN 2.0/ CAN FD interface expandable capacity; it is the best CAN bus communication solution for electric vehicle and AVG/AMR applications.

Features

- Designed to meet PCI Express Base Specification Revision 2.1
- Equipped with high reliable SUNIX **CAN FD** controller
- Complies with CAN specifications 2.0 and FD
- CAN FD bit rates for the data field up to 8 Mbit/s
- Isolation on the each CAN channel up to 2.5KV
- Surge protection up to 2KV
- Plug-n-Play, I/O address and IRQ assigned by system
- Support Windows and Linux SocketCAN drivers

Specifications

Board Level

Interface	PCI Express
Controller	SUNIX CAN FD controller
BUS	PCI Express Gen2 x 1 (single Lane)
IRQ & IO	Assigned by System
Protection	±15KV IEC61000-4-2 Air Gap Discharge ±8KV IEC61000-4-2 Contact Discharge Isolation on each channel 2.5KV Surge 2KV

CAN Communication

Type	CAN 2.0 / CAN FD	Channel	2-channel
Isolation	2500 VDC	Arbitration bit rate	1 Mbit/s
Pin Define	CAN H, CAN L, GND	Data bit rate	8 Mbit/s
Termination	120Ω Configured by Software		
PCB Connector	DB44 Female		

Software Support

Windows	Windows 10 (32/64 bit) /11 (64bit)
Linux	Linux Kernel 4.11 above / 5.x / 6.x

Declaration

Green Product	RoHS, WEEE
----------------------	------------

Regulatory Approvals

Hardware	CE / FCC / VCCI / BSMI
-----------------	------------------------

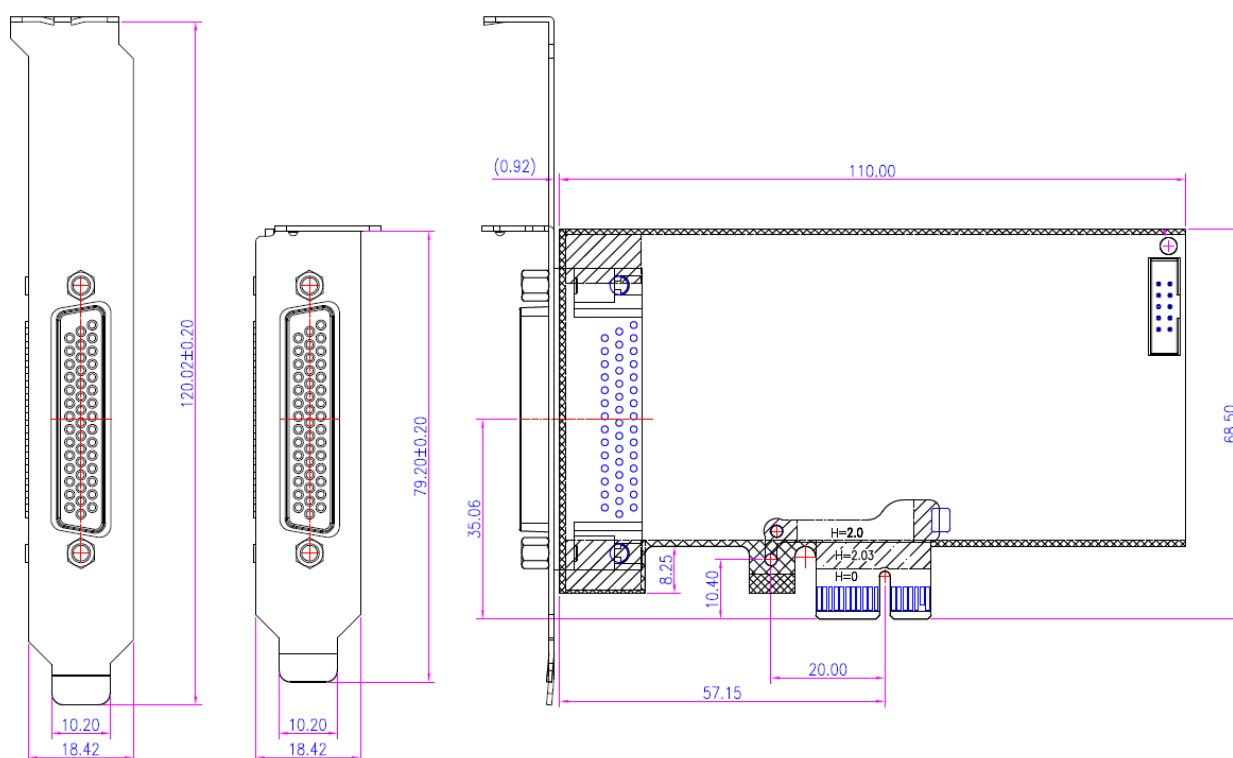
Environment

Operation Temperature	-20 to 70°C (-4 to 158°F)
Operation Humidity	5 to 95% (non-condensing)
Storage Temperature	-20 to 85°C (-4 to 185°F)

Dimension

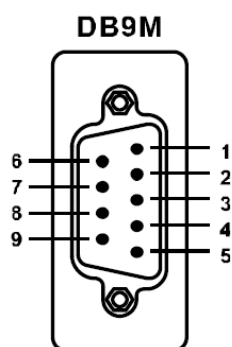
PCB Dimension	110 x 68.5mm
Bracket	Full Height 120 mm / Low Profile 79.2mm
Bracket Space	1

Unit : mm



Pin Assignment

■ CAN interface



PIN	Signal
1	-
2	CAN L
3	GND
4	-
5	-
6	GND
7	CAN H
8	-
9	-

Package

- CAN-E2102SI PCIe to 2-port Isolated CAN FD Card
- DB44 to 2-port DB9 Male Connection Cable

TAIWAN
 TAIPEI HEADQUARTERS
 Tel : +886-2-8913-1987
 R&D CENTER
 Tel : +886-2-8913-1987
 Email : info@sunix.com.tw

CHINA
 BEIJING
 Tel : +86-10-65308421
 SHENZHEN
 Tel : +86-0755-82339025
 Email : info@sunix.com.cn

EUROPE
 GERMANY
 Tel : +49 (0) 69-95209506
 Email : info@sunix-euro.de