



SER6437AN

2-port RS-232 Low Profile
PCI Express Card



Introduction

SUNIX SER6437AN, PCI Express serial communication card meets the PCI Express Base Specification Revision 2.0, allows users to add or expand two RS-232 COM ports on PC-based system to use serial devices further. It is compatible with PCI Express x1, x2, x4, x8 and x16 lane Bus allowing it to be installed in any slim size PC-based system with low profile bracket structure. The majorities of today's motherboard is not equipped with serial ports or only have one serial port. With SUNIX PCI Express serial card, users can add serial ports to their system, allowing them to use serial devices further. SUNIX SER6437AN card has 128-bytes onboard FIFO buffer and it is designed with SUNIX UART controller, SUN2212 as well as building many of SUNIX advanced features and technologies, making it the best solution for commercial and industrial automation applications.

Features

- Expands two independent RS-232 serial ports with communication speeds up to 115.2Kbps.
- With high reliable SUNIX SUN2212 native PCI Express UART controller.
- Designed to meet PCI Express Base Specification Revision 2.0.
- Supports x1, x2, x4, x8, x16 (lane) PCI Express Bus connector keys.
- On-chip hardware auto flow control to guarantee no data loss.
- Built-in $\pm 15KV$ ESD protection for all serial signals meets IEC61000-4-2 standard.
- Plug-n-Play, I/O address and IRQ assigned by BIOS.
- Low profile bracket design idea for slim or portable PC.
- Certified by CE, FCC, RoHS, and Microsoft WHQL approval.
- Support Microsoft Windows and Linux OS.

Specifications

Serial Communication

Interface	RS-232	Baud rate	50bps ~ 115.2Kbps
Controller	SUNIX SUN2212	Stop bit	1, 1.5, 2
BUS	PCI Express 2.0 x 1(single lan)	Parity	even, odd, none, mark, space
No. of Port	2-port	Flow Control	None,Xon/Xoff,RTS/CTS
IRQ & IO	Assigned by System	FIFO	128byte Hardware
Signal	DCD, TxD, RxD, RTS, CTS, DTR, DSR, GND, RI		
ESD Protection	±15KV Air / ±8KV Contact		
PCB Connector	1 pcs DB9 and 1pcs H2x6 pitch 2.54 pin header		
Cable	1 pcs RS-232 D-Sub 9 pin male 100mm cable (with low profile bracket)		

Driver Support

Microsoft Client	XP / Vista / 7 / 8.x / 10 (X86/X64) / 11
Microsoft Server	2003 / 2008 / 2012 / 2016 / 2019 / 2022 (X64)
Windows Embedded	XP Embedded / POSReady 2009 / POSReady / Embedded System 2009
Linux	Linux 2.x / 3.x / 4.x / 5.x / 6.x
DOS	DOS

Regulatory Approvals

Hardware	CE / FCC / VCCI / BSMI
Software	Microsoft WHQL Windows Microsoft Client: 10 (X86/X64) / 11 Microsoft Server: 2022

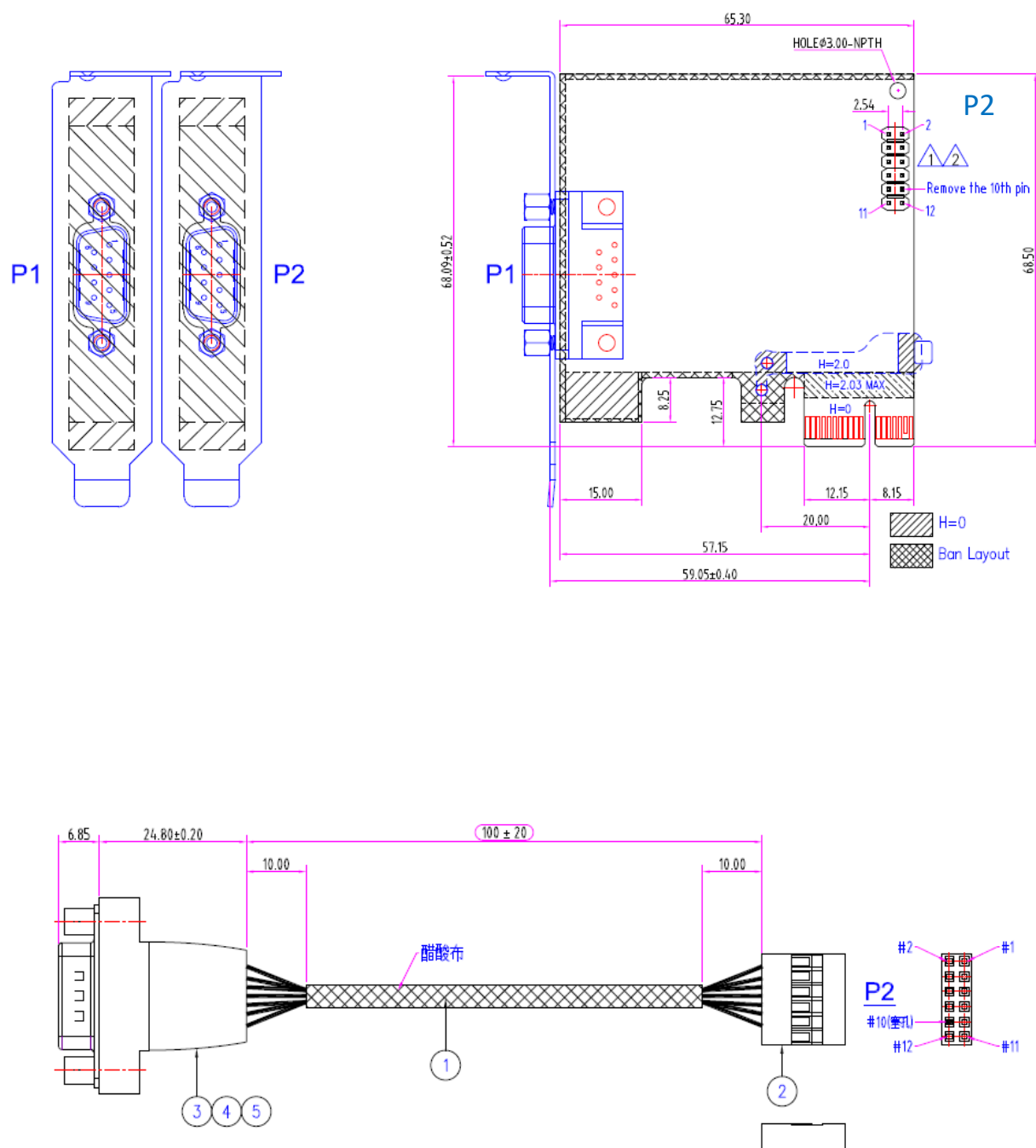
Environment

Operation Temperature	0 to 60°C (32 to 140°F)
Operation Humidity	5 to 95% RH
Storage Temperature	-20 to 85°C (-4 to 185°F)

Dimension

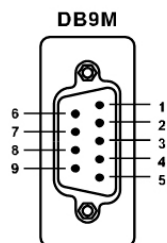
PCB Dimension	65.3 x 68.5 mm
Bracket	Low Profile 80 mm
Bracket Space	2

Mechanical Drawing (Unit = mm)



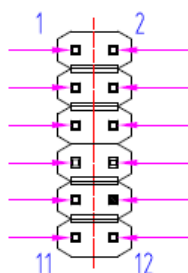
Pin Assignment

■ RS-232



Define	Pin
DCD	1
RxD	2
TxD	3
DTR	4
GND	5
DSR	6
RTS	7
CTS	8
RI	9

■ H2x6 pin header



Define	Pin
DCD	1
RxD	2
TxD	3
DTR	4
GND	5
DSR	6
RTS	7
CTS	8
RI	9
NC	10
+5V	11
+12V	12

Package

- SER6437AN - 2-port RS-232 Low Profile PCI Express Card x1
- Quick Installation Guide x1
- RS-232 D-Sub 9 pin male 100mm cable (with low profile bracket) x1

TAIWAN
TAIPEI HEADQUARTERS
Tel : +886-2-8913-1987
R&D CENTER
Tel : +886-2-8913-1987
Email : info@sunix.com.tw

CHINA
BEIJING
Tel : +86-10-65308421
SHENZHEN
Tel : +86-0755-82339025
Email : info@sunix.com.cn

EUROPE
GERMANY
Tel : +49 (0) 69-95209506
Email : info@sunix-euro.de