

UTC-515K

15.6" Ubiquitous Touch Computer UTC-515K with Intel® Atom® N97/i3-N305



DeviceOn/iService

Features

- Low-power, fanless system design
- Built-in Intel® Atom N97
- 15.6" monitor with 16:9 widescreen display
- IP65-rated front panel for water and dust resistance
- All-in-one aluminum extrusion design
- Supports both landscape and portrait screen orientations
- VESA 100 mm standard mounting holes for varied mounting demands
- Side groove design for integrating peripherals
- Support DeviceOn/iService software for remote device management
- Supports TPM 2.0



Introduction

UTC-515 is an all-in-one computer with an Intel® Atom N97 processor, widescreen LCD touch panel, and side groove design for integrating optional peripherals. Designed for diverse self-service, content broadcasting, and interactive signage applications, UTC-515 systems can be deployed in a wide range of usage scenarios for enhancing customer satisfaction, furthering brand equity, and maximizing business profits. Advantech's DeviceOn/iService is a next-generation unified device management solution based on the WISE-DeviceOn platform. Moreover, Advantech DeviceOn/iService Software is a next-generation unified device management solution based on the WISE-DeviceOn platform. With support for batch operations and multi-device control, DeviceOn/iService enables easy device configuration and deployment for convenient remote device management.

Specifications

Model	UTC-515K	
System	CPU	Intel Atom N97 Intel Atom i3-N305
	Base Frequency	N97: 3.6 GHz (4 cores) i3: 3.8 GHz (8 cores)
	Cache	L3 Cache 6MB
	Memory	1 x 262 pin so DIMM DDR5-4800 up to 16GB
	SSD	1 x 2.5 internal SATA SSD bay
	I/O	2 x RJ-45, Intel i226-V (10/100/1000/2500 Mbit/s)
		1 x HDMI (up to 4096 x 2160 x 24bpp@48-60Hz)
		1 x USB Type C
		1 x Audio Jack
		2 x USB 3.0
		2 x USB 2.0
	Stereo Speaker	2 x RS-232/422/485, max. 1Mbps
		2 x Antenna port (optional)
Mechanical	Expansion	2 x 2W
	Mount Options	1x M.2 2280/2242 M-Key for NVMe (PCIe Gen3)/SATA SSD
	Dimensions (W x H x D)	1x M.2 2230 E-Key
	Weight	VESA 100 x 100 mm, M4*6L
Board Features	Watchdog Timer	396.98 x 246.41 x 44 mm
	TPM	4.85 kg (10.67 lb)
Operating System	Watchdog Timer	65536 intervals, 0 ~ 65535 sec
	TPM	TPM2.0
Environmental	Operating System	Windows 10/11 IoT Enterprise Android 14 Linux
	Operating Temperature	
	Relative Humidity	0 ~ 40 °C/32 ~ 104 °F with 0.7 m/s air flow
	Shock	95% @ 40 °C/104 °F, non-condensing
	Vibration	Operating 10G peak acceleration (11ms duration), follow IEC 60068-2-27
	EMC/Safety	Operating Random Vibration Test 5 ~ 500Hz, 2Grms @with SSD
	Front Panel Protection	CE (RED Compliance), EN 61000-6-2: 2005 /AC: 2005, FCC, UL, CB, CCC, BSMI, ErP
		IP65 rated/NEMA4 compliant

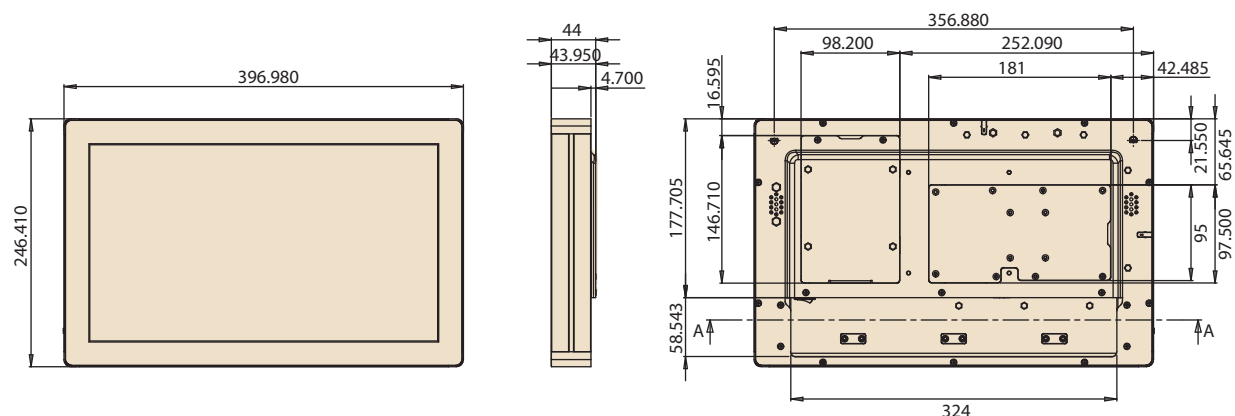
Specifications (Cont.)

Power Supply	Input Voltage	12V
	Power Consumption	Typical 40W Max 50W
	Adapter	12V, 7A (84W ITE adapter)
LCD Display	Size/Type	15.6" TFT LCD with LED backlight
	Max.Resolution	1920 x 1080
	Max. Color	262K
	Pixel Pitch (H x V)	252(H) x 252(V)
	Brightness	220 nits (Optional 400 nits)
Touchscreen (PE/RE)	Viewing Angle	90°/60° (170°/170° optional)
	Type	Projected capacitive, Single point Analog Resistive 5-wires touch
	Light Transmission	88% ± 2%
DeviceOn/iService Remote Device Management	Controller	USB interface
	Operating System	Windows 10
	Common Controls (Reboot, Shutdown)	✓
	Remote desktop	✓ (VNC)
	Audio Controls	✓*
	Connection Status	✓
	Hardware Status	✓*
	Hard Disk Status	✓*
	Batch Operation Support	✓
	OTA Storage Management	FTP
	OTA Software Updates	✓
	Software Watchlist	✓
	Software Start/Stop	✓*
	Peripherals Watchlist	✓*
	*Dependant on device model	

Note: DeviceOn/iService software must be downloaded from the Advantech website at <https://www.advantech.com/search/?q=DeviceOn%2FiService&st=support&sst=Utility>

Dimensions

Unit: mm



Ordering Information

Part Number	Description
UTC-515KP-ATB0E	15.6" 7H PCT.T/S with Intel® Atom N97, 8GB RAM, IT Adapter
UTC-515KR-ATB0E	15.6" Resi. T/S with Intel® Atom N97, 8GB RAM, IT Adapter
UTC-515KP-ATB1E	15.6" 7H PCT.T/S with I3-N305, 8GB RAM, IT Adapter
1702002600	Power Cord 3P UL/CSA(USA) 125V 10A 1.83M 180D
1702002605	Power Cord 2P FRANCE 10A/16A 220V 1.83M 90D
1700000596-11	Power cable, CCC, 3P, 10A, 250V, 183 cm (China)
1700032693-11	Power cable, BSI, 2P, 10A, 250V, 180 cm (UK)
1960120429N001	I/O cover for UTC-515K

Peripherals for UTC-500 Series

Part No.	Description
UTC-P01-A1E	5M Camera Module For UTC-5XX (USB connection)
UTC-P02-A0E	Magnet Strip Reader For UTC-5XX (USB connection)
UTC-P03-A1E	RFID Reader For UTC-5XX (USB connection)
UTC-P06-A2E	Smart Card Reader For UTC-5XX (USB connection)
UTC-P07-A4E	2D Barcode Module (Honeywell) for UTC-500 Series (USB connection)
UTC-P09-A0E	Fingerprint reader for UTC-5xx (USB connection)

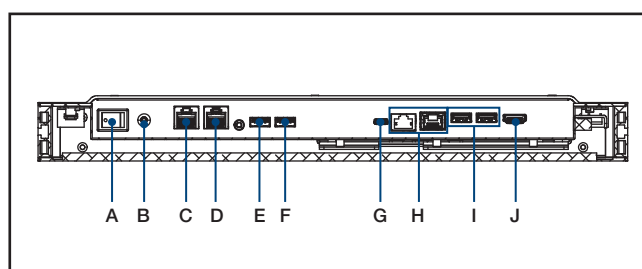
Optional Accessories

Part No.	Description
96PD-00824	UTK-700 Desktop Stand (w/o Printer)
96PD-00825	UTK-700 Extension Tower (For 96PD-00824 only)
UTC-520-STAND1E	Desktop stand for UTC-515/520
UTC-H01-STANDE	H-shaped floor stand
ARES-2424X-S170201	Table Stand, 100x100/75x75
ARES-12250-L101000	Wall Mount, 75/100mm

UTC-515K WiFi Ordering Information

Part No.	Description
UTC-WIFI-A7E	AIW-170BQ, 802.11ax/ac/b/g/n, BT5.2, QCA6856, 2T2R, M.2 2230

Fully- Integrated I/O



DeviceOn/iService

Unified Remote Device Management Software



Features

- Supports Advantech devices equipped with Windows, Android, and Linux OS
- Flexible device, location, user, and permissions management
- Enables remote monitoring and control of hardware, software, and peripherals
- Supports over-the-air (OTA) firmware and software updates
- Ensures quick, easy, and secure device onboarding
- RESTful APIs for third-party system integration

Introduction

Advantech's DeviceOn/iService is a next-generation unified device management solution based on the WISE-DeviceOn platform. Designed to enable centralized monitoring and remote management, DeviceOn/iService supports Advantech devices equipped with Windows, Linux, or Android operating systems. The software also supports the management of applications and integrated peripherals, such as a barcode scanner, card reader, camera, and printer. Users can remotely access and control connected devices, take screenshots, rollout OTA upgrades, and use remote desktop capabilities for troubleshooting from any location at any time. Moreover, DeviceOn/iService supports batch operations to facilitate the management of multiple devices simultaneously for easy and convenient device configuration and deployment.

Total Management



Devices & Hardware

- Windows, Linux, Android
- Hardware, storage, battery



Software & Peripherals

- Software monitoring & access
- Screens, USB devices, printers



Open for Expansion

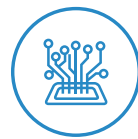
- Peripheral integration
- Open APIs for integration

Remote Access



Real-Time Monitoring

- Connection/hardware status
- Software/peripheral status
- Failure notifications



Remote Controls

- Power controls
- Audio, backlight controls
- Software controls



Troubleshooting

- Screenshots
- Remote desktop support

Operational Efficiency



OTA updates

- System/software updates
- File repository management
- App store



Batch Controls

- 1-to-many batch reboot, etc.
- Time-saving tasks



Setup Booster

- Software/peripheral watchlist
- Roles, rule templates

Note: Some functions may vary according to the product

System Architecture

