



PCI Express 1 port 2.5G BASE-T Network Card

User Manual

Ver.1

For latest manual and driver update:
Please visit <https://www.sunix.com> by searching "LAN1225".

Introduction

SUNIX LAN1225 PCIe to 2.5G Ethernet card is powered by the Intel® I226-LM controller, delivering stable and high-performance 2.5 Gigabit connectivity. Compared to traditional Gigabit Ethernet, the 2.5G speed offers up to 2.5 times the performance, making it ideal for enterprise workstations, servers, industrial PCs (IPC), and embedded systems. With a PCI Express x1 interface, the LAN1225 can be easily integrated into various host platforms and supports major operating systems such as Windows and Linux. Intel® network technology ensures low latency and high reliability, while supporting advanced features including Wake-on-LAN, VLAN tagging, PXE Boot, and Energy Efficient Ethernet (EEE) to enhance both performance and power efficiency.

Features

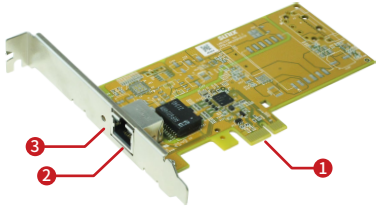
- Integrated MAC/PHY supporting 10BASE-T, 100BASE-TX, 1000BASE-T and 2500BASE-T 802.3 specifications.
- Support 1-Lane 5Gbps PCI Express Bus
- Transmit/Receive on-Chip buffer support
- Advanced Power Management (APM) Support—[formerly Wake on LAN].
- Advanced Configuration and Power Interface (ACPI) specification v2.0c.
- Support intel vPRO.
- Support ASPM L0s
- 2K surge and 2.5K isolation protection.

Package Checklist

Please check if the following items are present and in good condition upon opening package. Contact your vendor if any item is damaged or missing.

- LAN1225 Series - PCI Express 2.5G BASE-T Network Card
- Low profile bracket

Hardware Guide



- 1 PCI Express Gen2 x1
- 2 2.5G RJ45 Port

LED Function	A	B
10/100bps	Green - ON = Linking	OFF
1Gbps	Green - Blink = Transferring	Green
2.5Gbps		Yellow

Specification

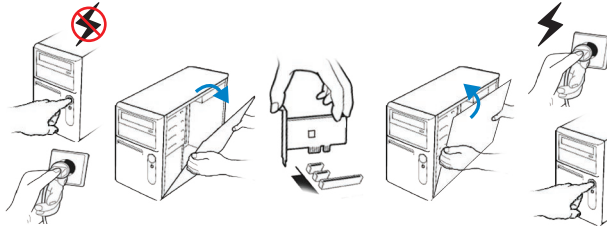
Model	LAN1225	Operating Environment	
Description	PCI Express 2.5G Network Card	Temperature	0 to 60 °C (32 to 140 °F)
Chipset	Intel I226LM	Humidity	< 85% non-condensing
Interface	PCI Express Gen2 x1	Storage temp.	-10 °C ~ 85 °C (14~176°F)
Port	RJ45 (2.5GbE) x 1	Regulatory Approvals	
Standard	IEEE 802.3, IEEE 802.3u, IEEE 802.3x, IEEE 802.3ab/az/bz IEEE 802.1Q VLAN Tagging, IEEE 802.1ad Double VLAN	EMC	EUR: CE, US: FCC, Japan: VCCI, TAIWAN: BSMI
Network Media	10BASE-T: UTP category 3, 4, 5 cable (maximum 100m) 100BASE-TX: UTP category 5, 5e cable (maximum 100m) 1000Base-T: UTP category 5, 5e cable (maximum 100m) 2500Base-T: UTP category 5e, 6 cable (maximum 100m)	Green	RoHS, WEEE, REACH
Data Rates	10/100/1000/2500Mbps	Dimension	
O.S Support	Windows 11, 10 (X86/X64) Linux 5.8 and above	PCB Dimension	130 * 68 * 1.6 mm
		Bracket	Standard 120 mm Low Profile 80 mm
		Bracket Space	1

Hardware Installation

Before inserting the card into the PCIe Express bus, please follow the detailed steps given below to install the PCIe card in your computer.

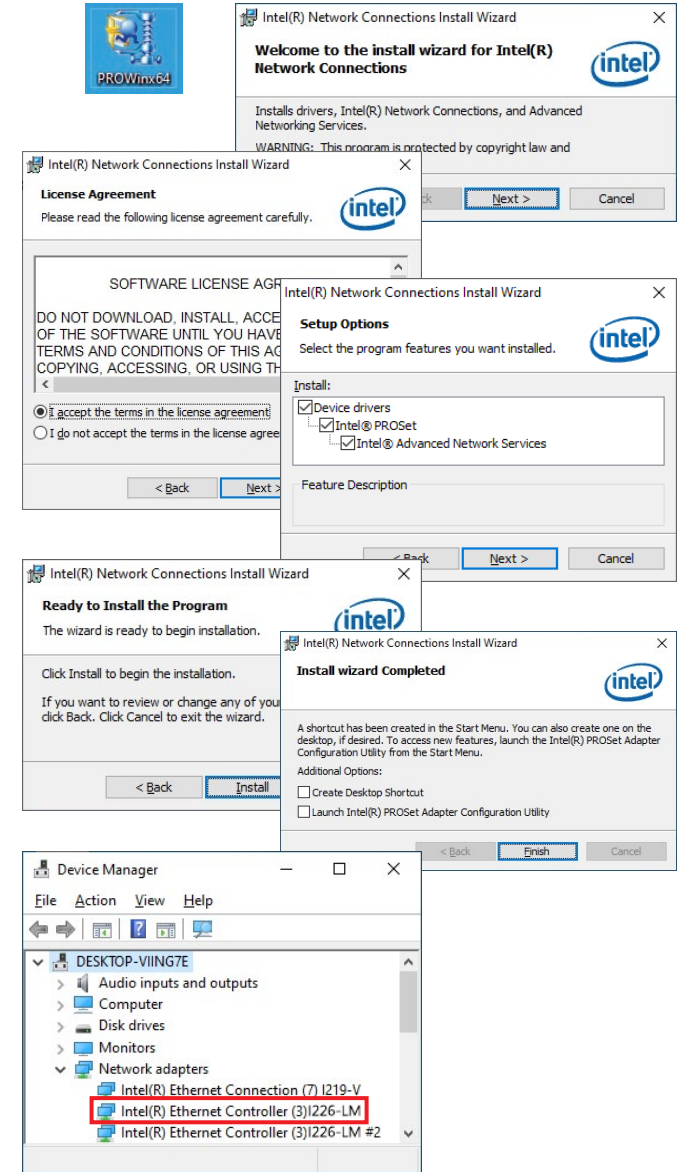
SAFETY FIRST To avoid damaging to the computer, make sure to remove any power connection before card installation.

- Step 1:** Turn your PC's power off, and shut off the power to any peripheral.
- Step 2:** Remove the power plug from the plug socket.
- Step 3:** Remove the cover from the computer case.
- Step 4:** If fitted, Remove the metal cover plate on the rear of a free PCI-E slot.
- Step 5:** Insert PCI Express Serial Communication Card into the free PCI-E slot and screw it firmly on the bracket side.
- Step 6:** Place the cover back onto the computer.
- Step 7:** Insert the plug into the plug socket.



Driver Installation

SUNIX LAN1225 PCI Express 2.5G Network card supports Windows and Linux operation system. Users can install the driver via the latest driver from official SUNIX website.

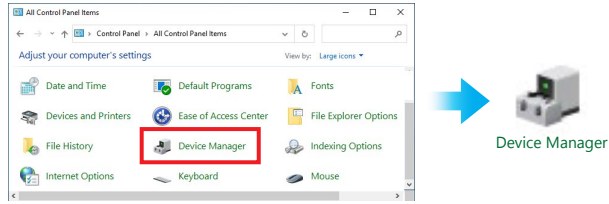


Hardware Verify

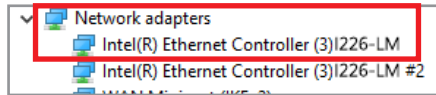
To make sure network card installed ready, user can verify in the device manager.

(1). Click on the "Device Manager" tab in the Windows Control Panel

Start > Control Panel > Device Manager



(2). Please entry "Network adapters" catalog, and "Intel(R) Ethernet Controller (3)I226-LM" shows in the device manager.

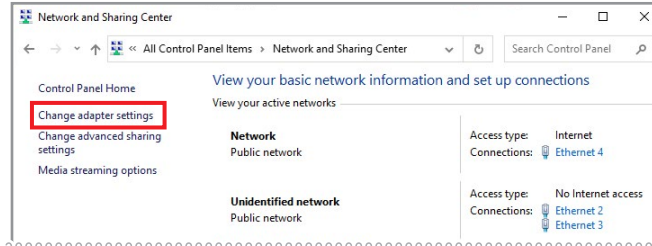
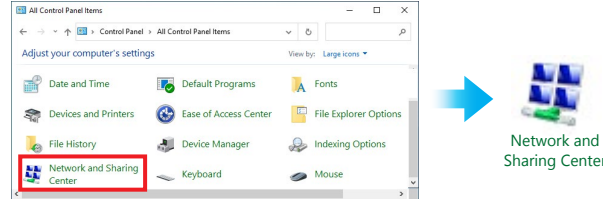


Network Setting

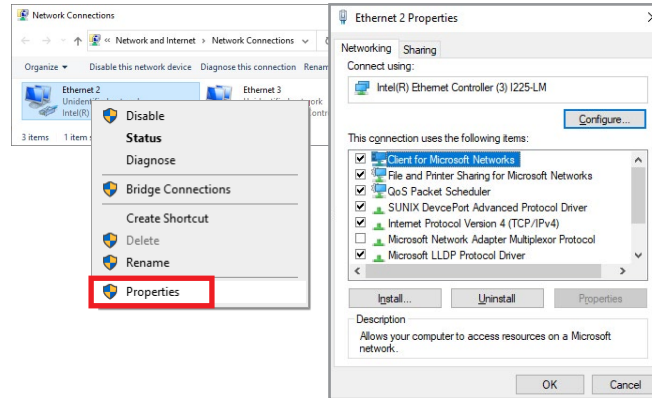
User can set 2.5G networking setting from the following instructions.

(1). Click on the "Network and Internet" tab in the Windows Control Panel

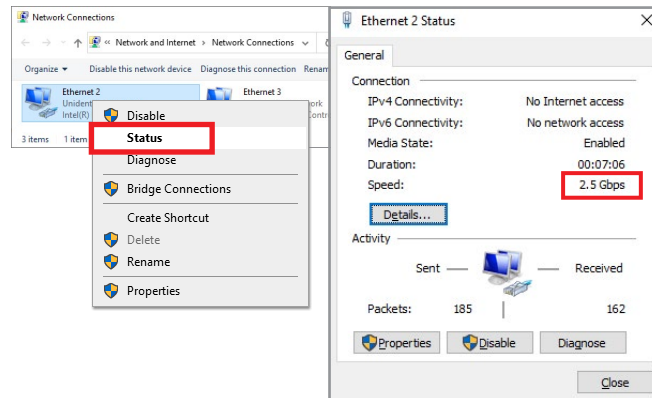
Start > Control Panel > Network and Internet > Network and Sharing Center



(2). Right click the "Ethernet" adapter and select "Properties" to set network settings.



(3). Right click the "Ethernet" adapter used by the network card, and select "Status" from the menu to affirm network settings.



Connection

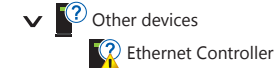
To ensure the better transfer performance, please use the CAT5E or higher grade network cable.

Troubleshooting

Q 1. My computer can NOT detect Network Ethernet card.

- Ans:a. Make sure the network card is correctly plugged into PCI Express slot.
 If not, turn off your computer and try another PCI Express slot.
 b. If the network card is plugged correctly, please check card's golden connectors (finger) is clean; if not, clean golden connectors (finger) surface by eraser.
 c. Please upgrade your motherboard BIOS to the least version.
 d. If above operations are useless, please try another PC desktop to check board itself is workable or not.

Q 2. How to deal with yellow exclamation mark on Ethernet Controller?



Ans: If there's an Ethernet Controller shows yellow exclamation mark in the device manager, please try to re-install driver again by following driver installation guide. If problem still happens, please try install network card into another PCI Express slot.

Q 3. I cannot get 2.5G Ethernet transfer performance.

Ans: Please make sure your networking environment supporting 2.5G hardware infrastructure, including Ethernet Switch and category 5e or higher level cable.

Q 4. How to configure 10/100/1000/2500 Ethernet settings?

Ans: PCIe Networking card is able to automatically sense and operate on either speed without manual reconfiguration. Just connect the correct Ethernet cable between PCIe card and Networking Switch or router, and then user would get the best performance.

Copyright©2026 SUNIX Co., Ltd. All Rights Reserved. No part of this publication may be reproduced, transcribed, stored in a retrieval system, translated into any language, or transmitted in any form or by any means, photocopying, manual, or otherwise, without prior written permission from SUNIX Co., Ltd. Disclaimer - SUNIX Co., Ltd. shall not be liable for any incidental or consequential damages resulting from the performance or use of this equipment. SUNIX Co., Ltd. makes no representations or warranties regarding the contents of this manual. Information in this manual has been carefully checked for reliability; however, no guarantee is given as to the correctness of this content. In the interest of continued product improvement, this company reserves the right to revise the manual or include amendments in the specifications of the product described within it at any time without notice and without obligation to notify any person of such revision or changes. The information contained in this manual is provided for general use by the customers. Trademarks - SUNIX is a registered trademark of SUNIX Co., Ltd. Other registered marks used herein are for identification purposes only and may be trademarks of their respective owners. BSMI 聲明 - 限用物質含有情況標示資訊網站請參考下列網址: <https://www.sunix.com/tw/support.php?item=st> 尋找型號/下載說明書。

E-mail for technical support: info@sunix.com
 Product information: www.sunix.com
 Tel: +886-2-8913-1987
 Fax: +886-2-8913-1986

Made in China 771-LAN122500-S01

