



# PCI Express 2ports 2.5G BASE-T Network Card

## User Manual

Ver.1

For latest manual and driver update:  
Please visit <https://www.sunix.com> by searching "LAN2225".

### Introduction

SUNIX LAN2225 PCIe to Dual 2.5G Ethernet card features the Intel® I226-LM dual-port controller, providing two independent 2.5 Gigabit Ethernet interfaces for simultaneous high-speed data transmission and multi-network applications. Compared with traditional Gigabit Ethernet, 2.5G delivers up to 2.5 times higher performance, making it ideal for servers, industrial PCs (IPC), network-attached storage (NAS), and edge computing platforms. With a PCI Express x1 interface, the LAN2225 can be easily integrated into various host systems and is compatible with major operating systems such as Windows and Linux. Intel® networking technology ensures low latency and high reliability, while supporting advanced features including Wake-on-LAN, VLAN tagging, PXE Boot, and Energy Efficient Ethernet (EEE), delivering a stable and power-efficient network solution.

### Features

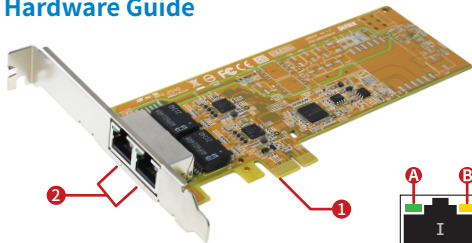
- Integrated MAC/PHY supporting 10BASE-T, 100BASE-TX, 1000BASE-T and 2500BASE-T 802.3 specifications.
- Support 1-Lane 5Gbps PCI Express Bus
- Transmit/Receive on-Chip buffer support
- Advanced Power Management (APM) Support- [formerly Wake on LAN].
- Advanced Configuration and Power Interface (ACPI) specification v2.0c.
- Support intel vPRO.
- Support ASPM L0s
- 2K surge and 2.5K isolation protection.

### Package Checklist

Please check if the following items are present and in good condition upon opening package. Contact your vendor if any item is damaged or missing.

- LAN2225 - PCI Express 2-port 2.5G BASE-T Network Card
- Low Profile bracket

### Hardware Guide



- ① PCI Express Gen2 x 1
- ② 2.5G RJ45 Port x 2

LED Function	A	B
10/100bps		OFF
1Gbps	Green - ON = Linking	Green
2.5Gbps	Green - Blink = Transferring	Yellow

### Specification

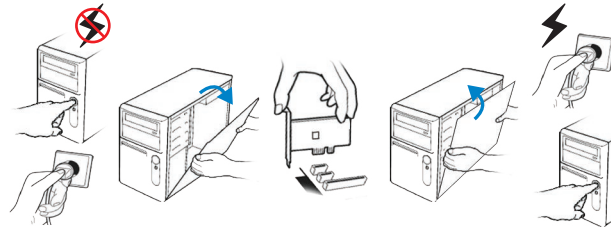
Model	LAN2225	Operating Environment	Temperature	0 to 60 °C (32 to 140 °F)
Description	PCI Express 2.5G Network Card	Humidity	< 85% non-condensing	
Chipset	Intel I226LM	Storage temp.	-10 °C ~ 85 °C (14~176°F)	
Interface	PCI Express Gen2 x1	Regulatory Approvals	EMC	EUR: CE, US: FCC, Japan: VCCI, TAIWAN: BSMI
Port	RJ45 (2.5GbE) x 2	Green		RoHS, WEEE, REACH
Standard	IEEE 802.3, IEEE 802.3u, IEEE 802.3x, IEEE 802.3ab/az/bz IEEE 802.1Q VLAN Tagging, IEEE 802.1ad Double VLAN	Dimension	PCB Dimension	170 * 68.5 * 1.6 mm
Network Media	10BASE-T: UTP category 3, 4, 5 cable (maximum 100m)	Bracket	Standard	120 mm
	100BASE-TX: UTP category 5, 5e cable (maximum 100m)		Low Profile	80 mm
	1000Base-T: UTP category 5, 5e cable (maximum 100m)		Bracket Space	1
Data Rates	10/100/1000/2500Mbps			
O.S Support	Windows 11, 10 (X86/X64) Linux 5.8 and above			

### Hardware Installation

Before inserting the card into the PCIe Express bus, please follow the detailed steps given below to install the PCIe card in your computer.

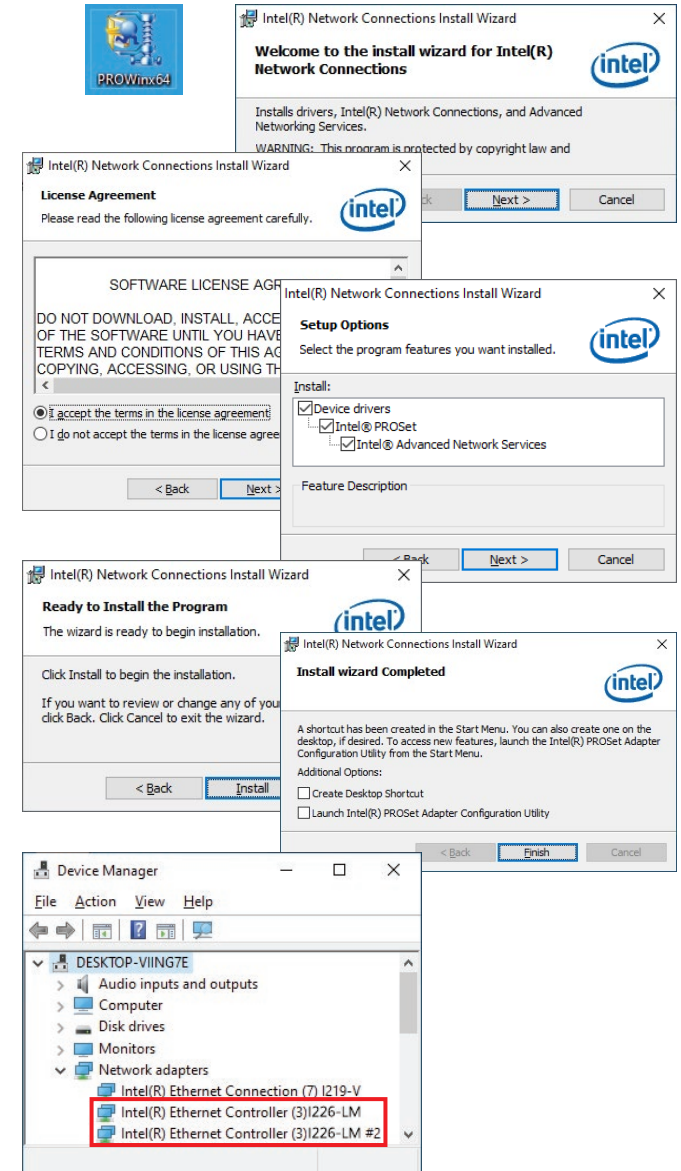
**SAFETY FIRST** To avoid damaging to the computer, make sure to remove any power connection before card installation.

- Step 1:** Turn your PC's power off, and shut off the power to any peripheral.
- Step 2:** Remove the power plug from the plug socket.
- Step 3:** Remove the cover from the computer case.
- Step 4:** If fitted. Remove the metal cover plate on the rear of a free PCI-E slot.
- Step 5:** Insert PCI Express Serial Communication Card into the free PCI-E slot and screw it firmly on the bracket side.
- Step 6:** Place the cover back onto the computer.
- Step 7:** Insert the plug into the plug socket.



### Driver Installation

SUNIX LAN2225 PCI Express 2.5G Network card supports Windows and Linux operation system. Users can install the driver via the attached CD or download the latest driver from official SUNIX website.

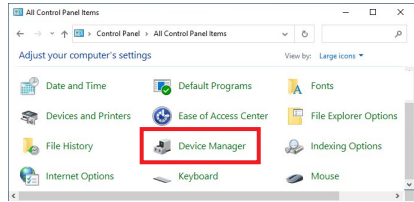


## Hardware Verify

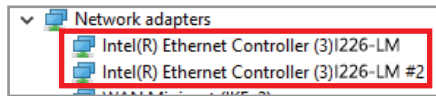
To make sure network card installed ready, user can verify in the device manager.

(1). Click on the "Device Manager" tab in the Windows Control Panel

Start > Control Panel > Device Manager



(2). Please entry "Network adapters" catalog, and "Intel(R) Ethernet Controller (3) I225-LM" shows in the device manager.

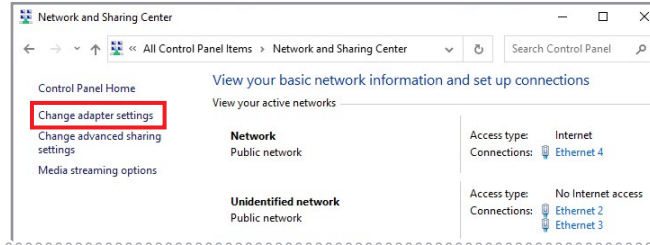
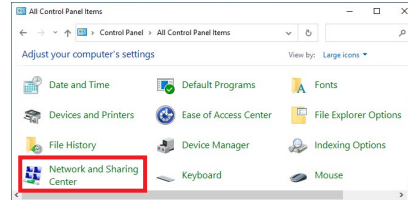


## Network Setting

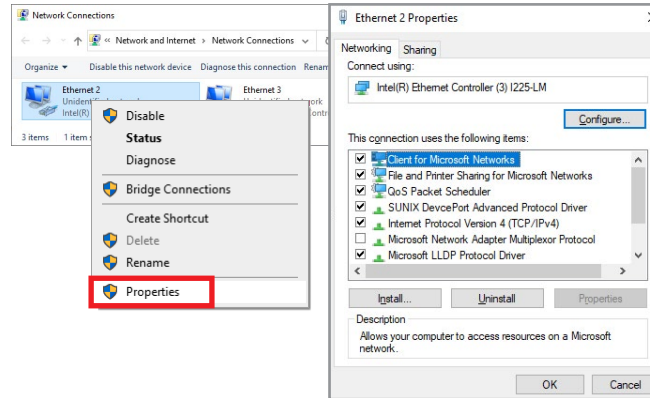
User can set 2.5G networking setting from the following instructions.

(1). Click on the "Network and Internet" tab in the Windows Control Panel

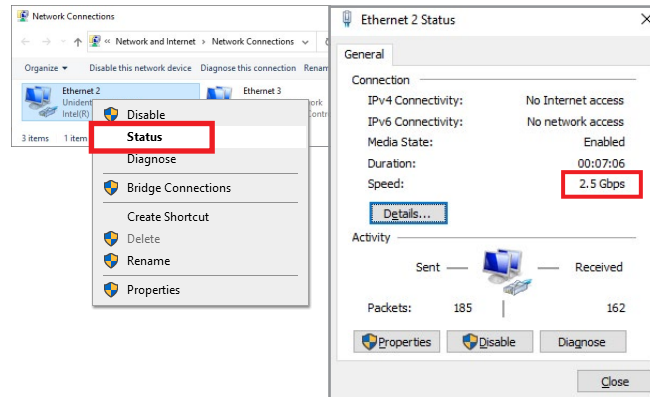
Start > Control Panel > Network and Internet > Network and Sharing Center



(2). Right click the "Ethernet" adapter and select "Properties" to set network settings.



(3). Right click the "Ethernet" adapter used by the network card, and select "Status" from the menu to affirm network settings.



## Connection

To ensure the better transfer performance, please use the CAT5E or higher grade network cable.

## Troubleshooting

Q 1. My computer can NOT detect Network Ethernet card.

- Ans: a. Make sure the network card is correctly plugged into PCI Express slot.  
If not, turn off your computer and try another PCI Express slot.  
b. If the network card is plugged correctly, please check card's golden connectors (finger) is clean; if not, clean golden connectors (finger) surface by eraser.  
c. Please upgrade your motherboard BIOS to the latest version.  
d. If above operations are useless, please try another PC desktop to check board itself is workable or not.

Q 2. How to deal with yellow exclamation mark on Ethernet Controller?

- Other devices
- Ethernet Controller

Ans: If there's an Ethernet Controller shows yellow exclamation mark in the device manager, please try to re-install driver again by following driver installation guide. If problem still happens, please try install network card into another PCI Express slot.

Q 3. I cannot get 2.5G Ethernet transfer performance.

Ans: Please make sure your networking environment supporting 2.5G hardware infrastructure, including Ethernet Switch and category 5e or higher level cable.

Q 4. How to configure 10/100/1000/2500 Ethernet settings?

Ans: PCIe Networking card is able to automatically sense and operate on either speed without manual reconfiguration. Just connect the correct Ethernet cable between PCIe card and Networking Switch or router, and then user would get the best performance.

Copyright©2026 SUNIX Co., Ltd. All Rights Reserved. No part of this publication may be reproduced, transcribed, stored in a retrieval system, translated into any language, or transmitted in any form or by any means, photocopying, manual, or otherwise, without prior written permission from SUNIX Co., Ltd. Disclaimer - SUNIX Co., Ltd. shall not be liable for any incidental or consequential damages resulting from the performance or use of this equipment. SUNIX Co., Ltd. makes no representations or warranties regarding the contents of this manual. Information in this manual has been carefully checked for reliability; however, no guarantee is given as to the correctness of this content. In the interest of continued product improvement, this company reserves the right to revise the manual or include amendments in the specifications of the product described within it at any time without notice and without obligation to notify any person of such revision or changes. The information contained in this manual is provided for general use by the customers. Trademarks - SUNIX is a registered trademark of SUNIX Co., Ltd. Other registered marks used herein are for identification purposes only and may be trademarks of their respective owners. BSMI 聲明 - 限用物質含有情況標示資訊網站請參考下列網址: <https://www.sunix.com/tw/support.php?item=st> 尋找型號/下載說明書。

E-mail for technical support: info@sunix.com  
Product information: www.sunix.com  
Tel: +886-2-8913-1987  
Fax: +886-2-8913-1986

Made in China 771-LAN22500-S01

