



# Quad port 1G BASE-T Network PCIe Card (LAN4350, LAN4350L)

## User Manual

Ver.1

For latest manual and driver update: Please visit <https://www.sunix.com> by searching "LAN4350".

### Introduction

SUNIX LAN4350 & LAN4350L is PCI Express Quad-Port RJ45 Ethernet Adapter is powered by the Intel I350 controller, delivering stable and efficient 1GbE connectivity across four independent network interfaces. Designed for compatibility with PCIe Gen2 platforms, it provides reliable data throughput suitable for enterprise servers, networking equipment, industrial systems, virtualization, and multi-segment network deployments. SUNIX LAN4350 integrates advanced networking features such as multi-queue support, hardware offloads, traffic steering, virtualization enhancements, and improved high-PPS packet handling, helping reduce CPU utilization and optimize overall network performance. With intelligent power-saving capabilities and broad operating system compatibility, this adapter is an ideal solution for data centers, embedded platforms, and robust network infrastructures.

### Features

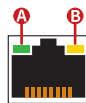
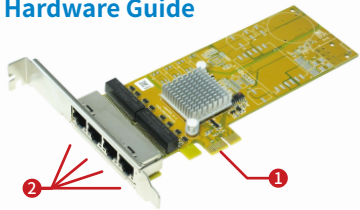
- Quad-Port 1GbE Controller, Provides four independent Gigabit Ethernet ports, ideal for server, industrial, and embedded networking applications.
- PCI Express Gen 2 (x1) Interface
- Supports Single Root I/O Virtualization (SR-IOV) and Virtual Machine Device Queues (VMDq) to improve packet handling efficiency and traffic isolation in virtualized environments.
- Energy Efficient Ethernet (IEEE 802.3az), Reduces power consumption during low network activity or idle states, enhancing energy efficiency for always-on systems.
- Advanced Offload Capabilities, Includes hardware offloads such as TCP/UDP/IP checksum offload, Large Send Offload (LSO), and Receive Side Scaling (RSS) to reduce CPU utilization.
- Precision Time Protocol (IEEE 1588) Supports PTP for hardware-based precise time synchronization, suitable for telecom, industrial control, and financial systems.
- Comprehensive Power Management (ACPI 2.0, Wake-on-LAN)
- Supports ACPI 2.0 power states, Wake-on-LAN, and energy detection features for efficient power control and remote wake functionality. 2K surge and 2.5K isolation input to output.

### Package Checklist

Please check if the following items are present and in good condition upon opening package. Contact your vendor if any item is damaged or missing.

- LAN4350 - Quad port 1G BASE-T Network PCIe Card
- or LAN4350L - Quad port 1G BASE-T Network Low profile PCIe Card

### Hardware Guide



LED Function	A (Green)	B (Yellow)
10/100bps	Blinking	N
1Gbps	ON	N

- ① PCI Express Gen2 x 1
- ② 1G RJ45 Port x4

### Specification

Model	LAN4350 / LAN4350L
Description	4 ports 1G Network PCIe Card
Chipset	Intel I350
Interface	PCI Express Gen2 x1
Port	RJ45 (1GbE) x 4
Standard	- IEEE 802.3 Ethernet interface for: 1000BASE-T, 100BASE-TX, and 10BASE-T applications (802.3, 802.3u, and 802.3ab)
Network Media	10BASE-T: UTP category 3, 4, 5 cable (maximum 100m) 100BASE-TX: UTP category 5, 5e cable (maximum 100m) 1000Base-T: UTP category 5, 5e cable (maximum 100m)
Data Rates	10/100/1000Mbps
O.S Support	Windows 10 - 11 (X86/X64) Linux 5.8 and above

### Operating Environment

Temperature	0 to 60 °C ( 32 to 140 °F)
Humidity	< 85% non-condensing
Storage temp.	-10 °C ~ 85 °C (14-176°F)

### Regulatory Approvals

EMC	EUR: CE, US: FCC, Japan: VCCI, TAIWAN: BSMI
Green	RoHS

### Dimension

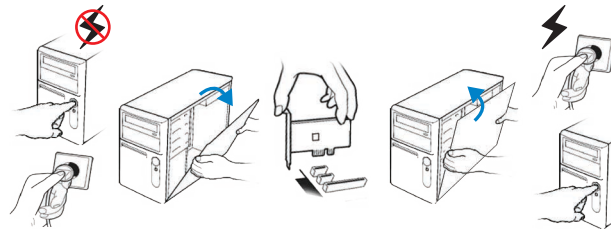
LAN4350	PCB: 167 * 68.5 * 1.6 mm	Bracket: Full High 120 mm	Bracket Space: 1
LAN4350L	PCB: 167 * 68.5 * 1.6 mm	Bracket: Low Profile 80 mm	Bracket Space: 1

### Hardware Installation

Before inserting the card into the PCIe Express bus, please follow the detailed steps given below to install the PCIe card in your computer.

**SAFETY FIRST** To avoid damaging to the computer, make sure to remove any power connection before card installation.

- Step 1:** Turn your PC's power off, and shut off the power to any peripheral.
- Step 2:** Remove the power plug from the plug socket.
- Step 3:** Remove the cover from the computer case.
- Step 4:** If fitted. Remove the metal cover plate on the rear of a free PCI-E slot.
- Step 5:** Insert PCI Express Serial Communication Card into the free PCI-E slot and screw it firmly on the bracket side.
- Step 6:** Place the cover back onto the computer.
- Step 7:** Insert the plug into the plug socket.

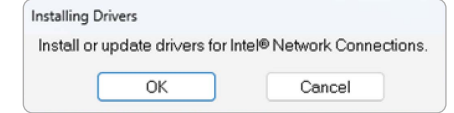


### Driver Installation

SUNIX LAN4350 / LAN4350L Network card supports Windows and Linux operation system. Users can install the driver via the latest driver from official SUNIX website.



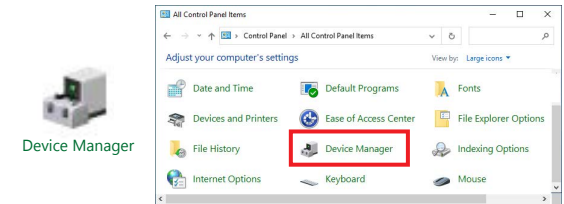
SetupBD.exe



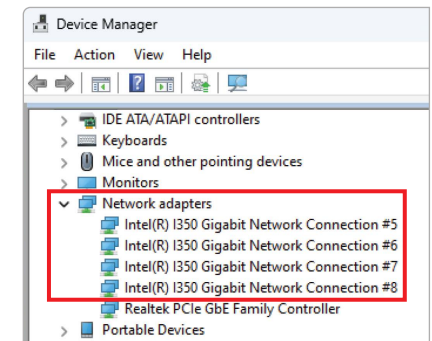
### Hardware Verify

To mark sure network card installed ready, user can verify in the device manager. (1). Click on the "Device Manager" tab in the Windows Control Panel

Start > Control Panel > Device Manager



(2). Please entry "Network adapters" catalog, and "Intel(R) I350 Gigabit Network Connection..." shows in the device manager.

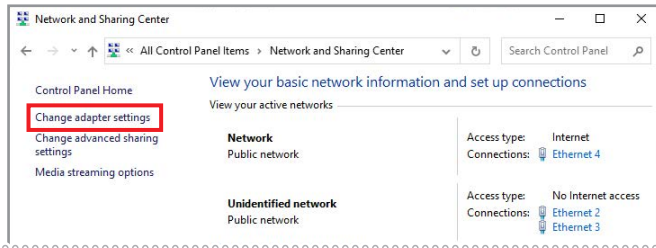
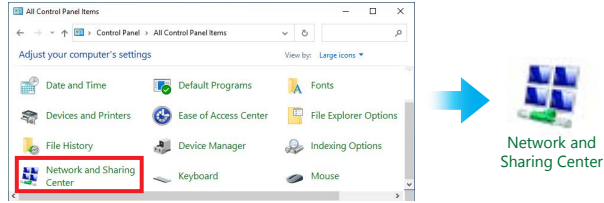


## Network Setting

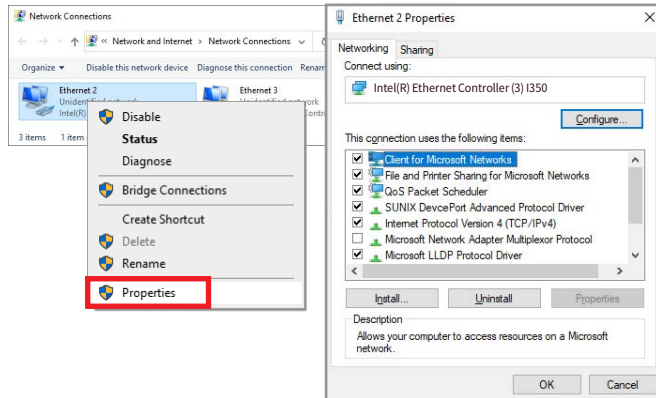
User can set 1G networking setting from the following instructions.

(1). Click on the "Network and Internet" tab in the Windows Control Panel

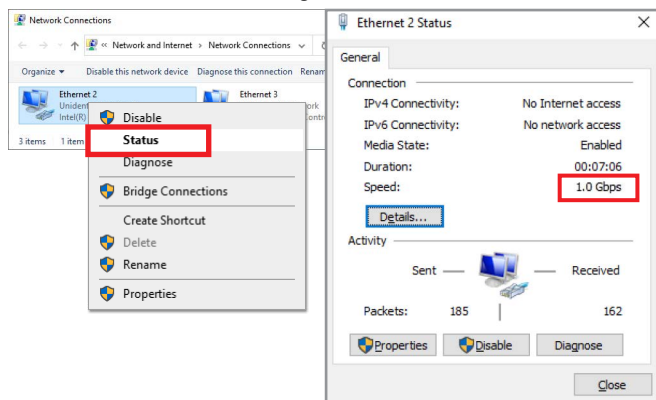
Start > Control Panel > Network and Internet > Network and Sharing Center



(2). Right click the "Ethernet" adapter and select "Properties" to set network settings.



(3). Right click the "Ethernet" adapter used by the network card, and select "Status" from the menu to affirm network settings.



## Connection



· To ensure the better transfer performance, please use the CAT5E or higher grade network cable.

## Troubleshooting

Q 1. My computer can NOT detect Network Ethernet card.

- Ans:a. Make sure the network card is correctly plugged into PCI Express slot.  
If not, turn off your computer and try another PCI Express slot.  
b. If the network card is plugged correctly, please check card's golden connectors (finger) is clean; if not, clean golden connectors (finger) surface by eraser.  
c. Please upgrade your motherboard BIOS to the least version.  
d. If above operations are useless, please try another PC desktop to check board itself is workable or not.

Q 2. How to deal with yellow exclamation mark on Ethernet Controller?

- ✓  Other devices
-  Ethernet Controller

Ans: If there's an Ethernet Controller shows yellow exclamation mark in the device manager, please try to re-install driver again by following driver installation guide. If problem still happens, please try install network card into another PCI Express slot.

Q 3. How to configure 10/100/1000 Ethernet settings?

Ans: PCIe Networking card is able to automatically sense and operate on either speed without manual reconfiguration. Just connect the correct Ethernet cable between PCIe card and Networking Switch or router, and then user would get the best performance.

Copyright©2026 SUNIX Co., Ltd. All Rights Reserved. No part of this publication may be reproduced, transcribed, stored in a retrieval system, translated into any language, or transmitted in any form or by any means, photocopying, manual, or otherwise, without prior written permission from SUNIX Co., Ltd. Disclaimer - SUNIX Co., Ltd. shall not be liable for any incidental or consequential damages resulting from the performance or use of this equipment. SUNIX Co., Ltd. makes no representations or warranties regarding the contents of this manual. Information in this manual has been carefully checked for reliability; however, no guarantee is given as to the correctness of this content. In the interest of continued product improvement, this company reserves the right to revise the manual or include amendments in the specifications of the product described within it at any time without notice and without obligation to notify any person of such revision or changes. The information contained in this manual is provided for general use by the customers. Trademarks - SUNIX is a registered trademark of SUNIX Co., Ltd. Other registered marks used herein are for identification purposes only and may be trademarks of their respective owners. BSMI 聲明 - 限用物質含有情況標示資訊網站請參考下列網址: <https://www.sunix.com/tw/support.php?item=st> 尋找型號/下載說明書。

E-mail for technical support: info@sunix.com  
Product information: www.sunix.com  
Tel: +886-2-8913-1987  
Fax: +886-2-8913-1986

Made in China 771-QL4350000-S01

