



# USB to Powered RS-232 Serial Hub UTS4009C series

## Quick Installation Guide

Ver.1

For latest manual and driver update: Please visit <https://www.sunix.com> by searching "UTS4009C".

### Introduction

SUNIX UTS4009C Serial Hub transform your Universal Serial Bus (USB) port into asynchronous RS-232 serial ports for communication with serial devices. It is compatible with both USB 2.0 and 1.1 specifications and provides serial ports with transfer speed up to 115.2Kbps. SUNIX UTS4009C supports +5 or +12VDC of power serial port output. It's convenient for users connecting serial devices without additional external power supply. It provides a quick, simple and cost-effective way to bring the advantages of data accessibility and mobile solution for kinds of commercial and industrial automation applications.

### Features

- Expands 4 (four) independent RS 232 serial ports through USB interface.
- Supports Universal Serial Bus Plug n Play and Hot Swapping feature.
- No IRQ, DMA, I/O address resource required.
- Provides RS 232 serial ports with +5 or +12 VDC power output
- Supports USB1.1 full speed 12Mbps and USB2.0 compatible.
- Each serial port provides transmission rate up to 115.2Kbps.
- Built in ± 15KV ESD protection for all serial signals.
- Each serial port owns power indicator LED to confirm output power status.
- Supports both USB bus power and additional external power adapter modes.
- Support Microsoft Windows and Linux.

### Package Checklist

Please check if the following items are present and in good condition upon opening package. Contact your vendor if any item is damaged or missing.

- UTS4009C - 4 ports USB-to-power RS-232 Serial Hub.
- USB Type A plug to micro B plug Cable 150 cm
- Quick Installation Guide

### Pin Assignment

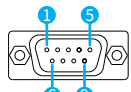
COM port(DB9M) pin assignments for USB to Serial Hub

UTS4009C

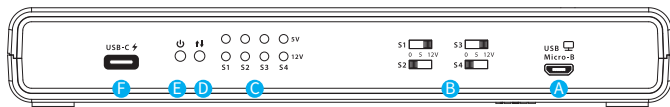
PIN	1	2	3	4	5	6	7	8	9
RS-232	DCD	RxD	TxD	DTR	GND	DSR	RTS	CTS	RI

UTS4009CD

PIN	1	2	3	4	5	6	7	8	9
RS-232	DCD	RxD	TxD	DTR	GND	DSR	RTS	CTS	RI



⚡ = 5 or 12 VDC power output



- A) USB Micro B to PC receptacle
- B) Slide Switch
- C) LED indicator
- D) Data transfer
- E) Power on status
- F) USB-C PD adapter input

LED Function	
Switch	0V 5V 12V
LED	- 5V LED 12V LED

※ In order to reach full performance, please make sure: Your USB-C PD adapter supports at least 45W output.

The power-receive pin of your serial device (ex: printer, scanner) is DCD or RI. The power-input level of your serial device is 5V or 12V.

### Specification

#### Serial Communication

Interface	RS-232	Baud rate	50~115.2Kbps
Controller	Prolific PL2303GC	Data bit	5, 6, 7, 8
BUS	Universal Serial Bus (USB)	Stop bit	1, 1.5, 2
No. of Port	4-port	Parity	even, odd, none, mark, space
IRQ & IO	Assigned by System	Connector	DB9 Male with Screw nuts
FIFO	1024-byte bi directional data FIFO buffers Receive 768 byte Buffer Hardware Transmit 256 byte Buffer Hardware		
Signal	TxD, RxD, RTS, CTS, DTR, DSR, DCD, RI, GND (power output please refer to Pin Assignment)		
Flow Control	RTS/CTS and/or DSR/DTR, XON/XOFF		
Protection	±15KV ESD protection for each signal Human Body Model (HBM) ±15KV IEC61000-4-2 Air Gap Discharge ±8KV IEC61000-4-2 Contact Discharge		

#### Driver Support

Microsoft Windows	7 / 8.x / 10 / 11(X86/X64)
Microsoft Server	2008R2 / 2012/2016 (X64) / 2019(X64)
Linux	Linux 2.6.x or later
MAC	MAC OS X

#### Power

Power Source	USB Bus Power +5VDC (±5%)
External Input	USB-C PD 45-100W DC Power Adapter (Not included)

#### Physical Characteristics

Dimension	190 x 119.6 x 28.2mm
Cable Length	1500mm

#### Operating Environment

Temperature	0 to 60 °C ( 32 to 140 °F)
Humidity	5% to 95% RH

#### Storage Environment

Temperature	-20 to 85 °C ( -4 to 185 °F)
-------------	------------------------------

#### Regulatory Approvals

Green	RoHS, WEEE, REACH
EMC	EUR: CE, US: FCC, Japan: VCCI, TAIWAN: BSMI

### Driver Installation/Verify

#### Microsoft Windows

In order to ensure proper operation of your USB to serial hub, please follow the instructions below:

- (1) Please go to SUNIX website for latest driver download.
- (2) Click the Setup.exe from your driver.
- (3) Follow the onscreen installation step.
- (4) After finishing installation, please connect the USB Serial Hub to your PC.
- (5) Please check to see if each is installed properly in Device Manager.

Start > Controller Panel > System > Device Manager



Setup.exe



(The number of COM ports will depend on what products you bought)

#### Apple macOS

Please download the driver for macOS, which includes driver and installation guide.

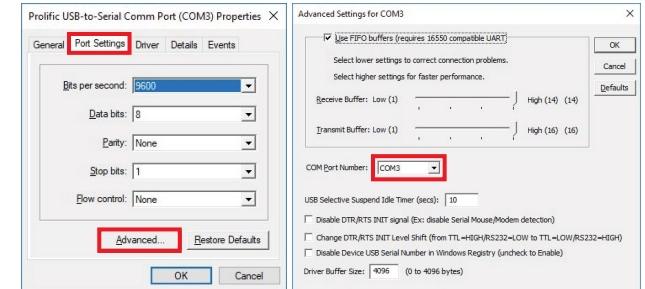
#### Linux

- (1) Please go to SUNIX website for latest driver download.
- (2) Please find the nearest Linux kernel version first.
- (3) make all // make a new driver.
- (4) sudo rmmod pl2303.ko // remove driver
- (5) sudo insmod pl2303.ko // add\_1 a new driver
- (6) sudo cp pl2303.ko /lib/modules/\$uname\_r/kernel/drivers/usb/serial // add\_2 a new driver

### Port Setting

After installing USB to Serial Hub successfully, you can modify the setting for each port in Device Manager.

- (1) Right click your mouse on the COM port, and select "Properties".
- (2) Select "Port Setting" page to modify COM port setting.
- (3) Select "Advanced" icon, you can modify COM port number and FIFO.

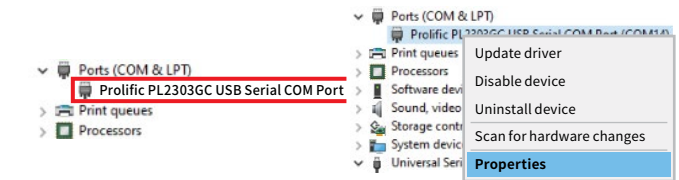


- (4) When serial device requires setting to a specific COM number, confirm the port number match the settings required for your serial device.

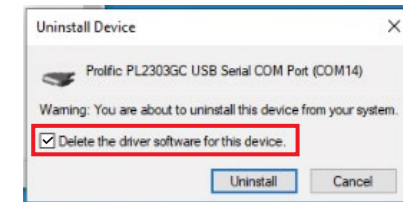
### Uninstalling Driver

After installing USB to Serial Hub successfully, you can modify the setting for each port in Device Manager.

- (1) You can go to the Device Manager and right click your mouse on the COM port, and select "Properties".



- (2) Please select "Driver".
- (3) Please select "Uninstall" in the Driver setting.
- (4) Select "Delete the driver software for this device" to finish the uninstallation.



### Troubleshooting

After installing USB to Serial Hub successfully, you can modify the setting for each port in Device Manager.

Q1. The USB to Serial Hub will NOT communicate with my serial device.

Ans: It may cause by following issue:

- a. Please verify that the USB to Serial Hub is installed correctly.
- b. Confirm that the port settings match the settings required for your serial device.
- c. If the serial device requires software, make sure it's installed properly.
- d. Make sure the number of ports is matching the number of USB to Serial Hub COM port.
- e. USB to Serial Hub does NOT support serial mouse.
- f. Please download the latest driver to support your new serial product.

Q2. Why the COM port number will be different?

Ans: The COM port number is assigned by which USB slot is used to connect to the computer. If changing USB slot, the port number will change.

Please keep installing USB Serial Hub in the same USB slot.