



# USB to RS-232 Serial Adapter UTS1009DF

## User Manual

Ver.1

For latest manual and driver update:  
Please visit <https://www.sunix.com> by searching "UTS1009DF".

### Introduction

SUNIX ComHub UTS series transform your Universal Serial Bus (USB) port into asynchronous RS-232 serial ports for communication with serial devices. The UTS1009DF adapter is compatible with both USB 2.0 and 1.1 specifications and provides serial ports with transfer speed up to 115.2Kbps. It provides a quick, simple and cost-effective way to bring the advantages of data accessibility and mobile solution for kinds of commercial and industrial automation applications.

### Features

- Expands one independent RS-232 serial port through USB interface.
- Supports Universal Serial Bus Plug-n-Play and Hot-Swapping feature.
- No IRQ, DMA, I/O address resource required.
- Supports USB2.0 and USB1.1 compatible.
- Each serial port provides transmission rate up to 115.2Kbps.
- Built-in ± 8KV ESD protection for all serial signals.
- Compact Size and low power consumption.
- Supports USB bus power mode without additional external power.
- Certified by CE, FCC, RoHS, and Microsoft WHQL approval.
- Support Microsoft Windows and Linux.

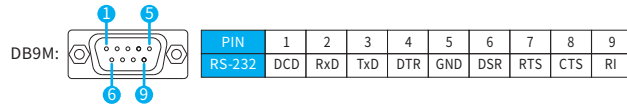
### Package Checklist

Please check if the following items are present and in good condition upon opening package. Contact your vendor if any item is damaged or missing.

- UTS1009DF - 1 port USB-to-RS-232 Adapter, Cable 350mm
- Quick Installation Guide

### Pin Assignment

COM port pin assignments for USB to Serial Adapter



Copyright©2024 SUNIX Co., Ltd. All Rights Reserved. No part of this publication may be reproduced, transcribed, stored in a retrieval system, translated into any language, or transmitted in any form or by any means, photocopying, manual, or otherwise, without prior written permission from SUNIX Co., Ltd. Disclaimer - SUNIX Co., Ltd. shall not be liable for any incidental or consequential damages resulting from the performance or use of this equipment. SUNIX Co., Ltd. makes no representations or warranties regarding the contents of this manual. Information in this manual has been carefully checked for reliability; however, no guarantee is given as to the correctness of this content. In the interest of continued product improvement, this company reserves the right to revise the manual or include amendments in the specifications of the product described within it at any time without notice and without obligation to notify any person of such revision or changes. The information contained in this manual is provided for general use by the customers. Trademarks - SUNIX is a registered trademark of SUNIX Co., Ltd. Other registered marks used herein are for identification purposes only and may be trademarks of their respective owners. BSMI 聲明 - 附用物質含有情況請參閱資訊網站請參考下列網址: <https://www.sunix.com.tw> 操作說明: 選擇頁面之產品/型號/文件下載區(RoHS文件)。

E-mail for technical support: [info@sunix.com](mailto:info@sunix.com) Tel: +886-2-8913-1987  
Product information: [www.sunix.com](http://www.sunix.com) Fax: +886-2-8913-1986



Made in China 771-UTS1009DF1-S01

### Specification

#### Serial Communication

Interface	RS-232
Controller	FTDI FT232RL
BUS	Universal Serial Bus (USB)
No. of Port	1 port
IRQ & IO	Assigned by System
FIFO	Receive 128 byte Buffer Hardware Transmit 256 byte Buffer Hardware
Signal	TxD, RxD, RTS, CTS, DTR, DSR, DCD, RI, GND
Baud rate	50-115.2 Kbps
Data bit	5, 6, 7, 8
Stop bit	1, 1.5, 2
Parity	even, odd, none, mark, space
Flow Control	None, Xon/Xoff, RTS/CTS
Protection	±8KV ESD Contact Discharge
Connector	DB9 Male with Screw Nut

#### Driver Support

Windows Client	7 / 8.x / 10 (X86/X64) / 11
Windows Server	2008R2 / 2012R2 / 2016 (X64)
Windows Embedded	CE4.2 / 5.2 / 6.0 / 7.0 / 2013
Linux	Linux 3.0.x or later

#### Power

Power Source	USB Bus-power +5VDC(5%)
Consumption	Standby: <100mA / 5VDC Working: <150mA / 5VDC

#### Operating Environment

Temperature	0 to 60°C ( 32 to 140°F )
Humidity	5% to 95% RH

#### Storage Environment

Temperature	-20 to 70°C ( -4 to 158°F )
-------------	-----------------------------

#### Physical Characteristics

Dimension	15 x 45 x 33 mm
Cable	350mm

#### Regulatory Approvals

Hardware	CE \ FCC \ VCCI \ BSMI
Software	Microsoft WHQL certification

### Driver Installation/Verify

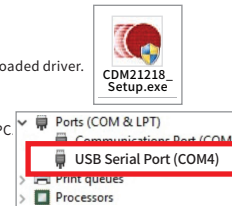
Please go to SUNIX website (<http://www.sunix.com>) by searching "UTS1009DF", or visit our chipset vender: FTDI web site (<https://ftdichip.com/drivers/>) for the latest driver.

#### Microsoft Windows

Windows Client: XP / 7 / 8.x / 10 (X86/X64) / 11  
Windows Server: 2008R2 / 2012R2 / 2016 (X64)

- Please insert the CD driver into your CD/DVD ROM or prepare your downloaded driver.
- Click the Setup.exe
- Follow the onscreen installation step.
- After finishing installation, please connect the USB Serial Adapter to your PC
- Please check to see if each is installed properly in Device Manager.

Start > Controller Panel > System > Device Manager  
(The number of COM port is product dependent)



#### Linux

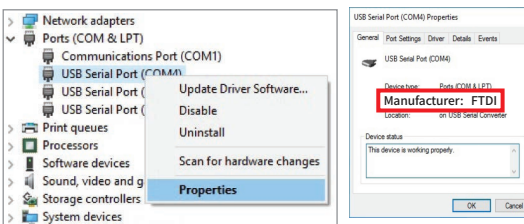
Supported Linux 3.0 or later, and Ubuntu 11.10, kernel 3.0.0-19

- Please insert the CD driver into your CD/DVD ROM or prepare your downloaded driver. check the individual folder as the following location.  
: \USB \USB to IO \ Linux \
- Please find the nearest Linux kernel version first.
- Proceed the Linux installation

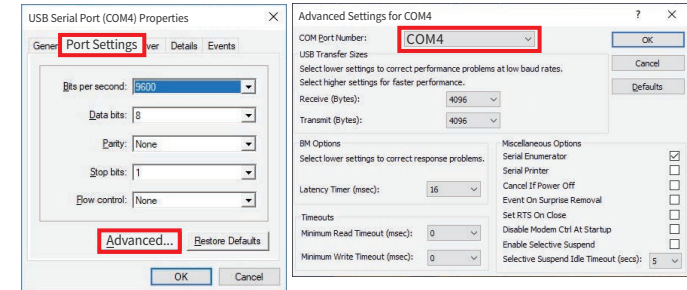
### Port Setting

After installing USB to Serial Adapter successfully, you can modify the setting for each port in Device Manager.

- Right click your mouse on the COM port, and select "Properties". Please make sure Manufacturer is FTDI
- Select "Port Setting" page to modify COM port setting.
- Select "Advanced" icon, you can modify COM port number and FIFO.



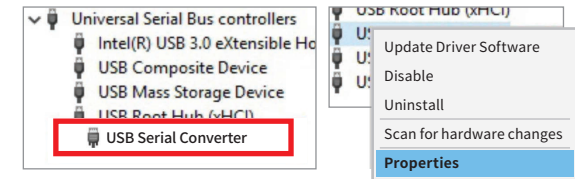
- When serial device requires setting to a specific COM number, confirm the port number match the settings required for your serial device.



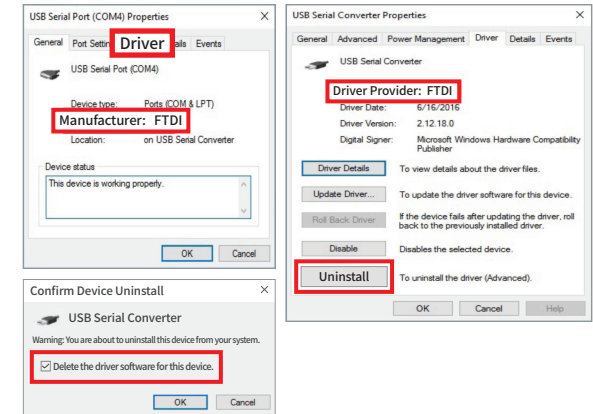
### Uninstalling Driver

After installing USB to Serial Adapter successfully, you can modify the setting for each port in Device Manager.

- You can go to the Device Manager and right click your mouse on the COM port, and select "Properties".



- Please make sure the Manufacturer is FTDI, and select "Driver".
- Please select "Uninstall" in the Driver setting.
- Select "Delete the driver software for this device" to finish the uninstallation.



### Troubleshooting

After installing USB to Serial Adapter successfully, you can modify the setting for each port in Device Manager.

- Q 1. The USB to Serial Adapter will NOT communicate with my serial device.  
Ans: It may cause by following issue:
- Please verify that the USB to Serial Adapter is installed correctly.
  - Confirm that the port settings match the settings required for your serial device.
  - If the serial device requires software, make sure it's installed properly.
  - Make sure the number of ports is matching the number of USB to Serial Adapter COM port.
  - e. USB to Serial Adapter does NOT support serial mouse.
  - f. Please download the latest driver to support your new serial product.

- Q 2. Why is the OS loading sometimes around 45% when using USB to Serial Adapter under Windows XP?  
Ans: This problem is a common characteristic that appears when using USB devices under Windows XP.

- Q 3. Why the COM port number will be different under XP?  
Ans: The COM port number is assigned by which USB slot is used to connect to the computer. If changing USB slot, the port number will change. Please keep installing USB adapter in the same USB slot.