



# USB to RS-232 Serial Adapter UTS-GC/PF series

## User Manual

Ver.1

For latest manual and driver update:  
Please visit <https://www.sunix.com> by searching "UTS, GC, PF".

### Introduction

SUNIX ComHub UTS series transform your Universal Serial Bus (USB) port into asynchronous RS-232 serial ports for communication with serial devices. The UTS adapter is compatible with both USB 2.0 and 1.1 specifications and provides serial port with transfer speed up to 115.2Kbps. It provides a quick, simple and cost-effective way to bring the advantages of data accessibility and mobile solution for kinds of commercial and industrial automation applications.

### Features

- Expands 1/2/4 independent RS-232 serial ports through USB interface.
- Supports Universal Serial Bus Plug-n-Play and Hot-Swapping feature.
- No IRQ, DMA, I/O address resource required.
- Supports USB2.0 and USB1.1 compatible.
- Serial port provides transmission rate up to 115.2Kbps.
- Built-in ± 15KV ESD protection for all serial signals.
- Compact Size and low power consumption.
- Supports USB bus power without additional external power.
- Certified by CE, FCC, RoHS, and Microsoft WHQL approval.
- Support Microsoft Windows and Linux.

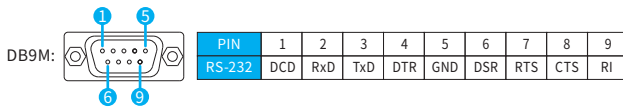
### Package Checklist

Please check if the following items are present and in good condition upon opening package. Contact your vendor if any item is damaged or missing.

- USB to RS-232 Adapter, 1-port Cable 120 cm (4ft)
- 2-port Cable 150 cm (4ft)
- 4-port Cable 150 cm (4ft)

### Pin Assignment

COM port pin assignments for USB to Serial Adapter



### Specification

#### USB Communication

Interface	Universal Serial Bus (USB)
Controller	Prolific PL2303GC
Performance	USB 1.1 full speed 12Mbps USB 2.0/3.0/3.1 compatible.
Receptacle	USB Type-A with cable

#### Serial Communication

Interface	RS-232
No. of Port	1, 2, or 4-port (Product Dependent) 1-port: USB to 1-port RS-232 Model 2-port: USB to 2-port RS-232 Model 4-port: USB to 4-port RS-232 Model
Baud rate	75bps ~ 115.2Kbps
Signal	TxD, RxD, RTS, CTS, DTR, DSR, DCD, RI, GND
FIFO	16 byte Hardware
Data bit	5, 6, 7, 8
Stop bit	1, 1.5, 2
Parity	even, odd, none, mark, space
Flow Control	None, Xon/Xoff, RTS/CTS
Protection	±15KV ESD protection for each signal Human Body Model ±15KV IEC1000-4-2 Air Gap Discharge ±15KV IEC61000-4-2 Air Gap Discharge(4-port) ±8KV ESD IEC61000-4-2 Contact Discharge
Receptacle	D-Sub 9-pin Male

#### Driver Communication

Windows Client	7 / 8.x / 10 (X86/X64)
Windows Server	2008R2 / 2012/2016(X64)
Windows Embedded	Windows Embedded CE, Windows CE
Linux	Linux 2.6.x or later
Mac	MAC OS X

### Driver Installation/Verify

#### Microsoft Windows

In order to ensure proper operation of your USB to serial adapter, please follow the instructions below:

- (1) Please go to SUNIX website for latest driver download.
- (2) Click the Setup.exe from your driver.
- (3) Follow the onscreen installation step.
- (4) After finishing installation, please connect the USB Serial Adapter to your PC.
- (5) Please check to see if each is installed properly in Device Manager.



Start > Controller Panel > System > Device Manager



#### Apple macOS

Please download the driver for macOS, which includes driver and installation guide.

#### Linux

- (1) Please go to SUNIX website for latest driver download.
- (2) Please find the nearest Linux kernel version first.
- (3) make all // make a new driver.
- (4) sudo rmmod pl2303.ko // remove driver
- (5) sudo insmod pl2303.ko // add\_1 a new driver
- (6) sudo cp pl2303.ko /lib/modules/\$(uname -r)/kernel/drivers/usb/serial // add\_2 a new driver

#### Power

Input	USB Bus-power 5VDC
Consumption	Model 1-port: < 0.7W = 5Vx130mA 2-port: < 1.3W = 5Vx250mA 4-port: < 2.5W = 5Vx500mA

#### Operating Environment

Temperature	0 to 60 °C ( 32 to 140 °F )
Humidity	5% to 95% RH

#### Storage Environment

Temperature	-20 to 85 °C ( -4 to 185 °F )
-------------	-------------------------------

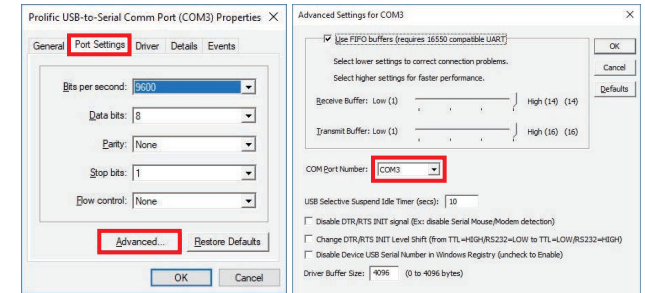
#### Regulatory Approvals

Hardware	EUR: CE, US: FCC, Japan: VCCI, TAIWAN: BSMI
Software	Microsoft WHQL certification

### Port Setting

After installing USB to Serial Adapter successfully, you can modify the setting for each port in Device Manager.

- (1) Right click your mouse on the COM port, and select "Properties".
- (2) Select "Port Setting" page to modify COM port setting.
- (3) Select "Advanced" icon, you can modify COM port number and FIFO.

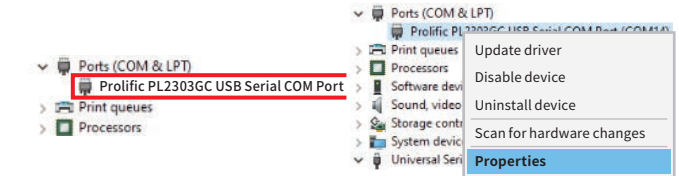


- (4) When serial device requires setting to a specific COM number, confirm the port number match the settings required for your serial device.

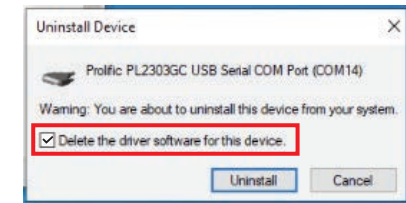
### Uninstalling Driver

After installing USB to Serial Adapter successfully, you can modify the setting for each port in Device Manager.

- (1) You can go to the Device Manager and right click your mouse on the COM port, and select "Properties".



- (2) Please select "Driver".
- (3) Please select "Uninstall" in the Driver setting.
- (4) Select "Delete the driver software for this device" to finish the uninstallation.



### Troubleshooting

After installing USB to Serial Adapter successfully, you can modify the setting for each port in Device Manager.

- Q 1. The USB to Serial Adapter will NOT communicate with my serial device.  
Ans: It may cause by following issue:
- a. Please verify that the USB to Serial Adapter is installed correctly.
  - b. Confirm that the port settings match the settings required for your serial device.
  - c. If the serial device requires software, make sure it's installed properly.
  - d. Make sure the number of ports is matching the number of USB to Serial Adapter COM port.
  - e. USB to Serial Adapter does NOT support serial mouse.
  - f. Please download the latest driver to support your new serial product.

- Q 2. Why the COM port number will be different?  
Ans: The COM port number is assigned by which USB slot is used to connect to the computer.  
If changing USB slot, the port number will change. Please keep installing USB adapter in the same USB slot.

